



# OFFICE PRODUCTS



Seating .....	1596 - 1606
Tables .....	1607 - 1608
Computer Supplies .....	1609
Safes .....	1610
Filing Storage Systems & Office Furnishings .....	1611 - 1615
Marker & Bulletin Boards .....	1616 - 1617
Key Cabinets & Key Reels .....	1618 - 1619
Hand & Office Labellers .....	1620 - 1622
VELCRO® .....	1623
Clocks .....	1624 - 1625
General Office Supplies .....	1626 - 1632
Cafeteria Supplies .....	1633 - 1635
Water Coolers .....	1636 - 1637
Plumbing Fixtures .....	1638 - 1641

**HORIZON  
SEATING**

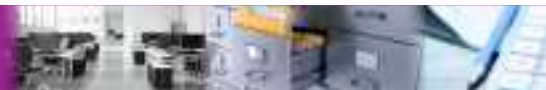


**OASIS**  
The Word for Water Coolers Worldwide™

**RS** Royal  
Sovereign

**brother**  
at your side

MADE IN TACOMA  
— SINCE 1916 —  
*Rite in the Rain*®  
— DEFYING MOTHER NATURE —



## THE OFFICE CHAIR

ONE OF THE MOST IMPORTANT COMPONENTS  
OF A PROPER WORKSTATION

Adjust the backrest height so that the lumbar support rests at the lower back.

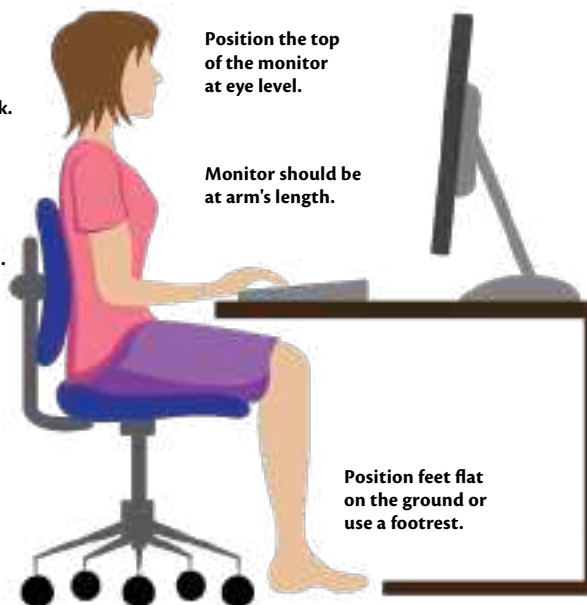
Elbows are bent at 90°.

Wrists are straight and fingers relaxed.

Seat with waterfall design promotes circulation in legs.

Independent back angle and height adjustment.

Adjust the height of the chair so that knees and hips are at 90°.



Position the top of the monitor at eye level.

Monitor should be at arm's length.

Position feet flat on the ground or use a footrest.

## 1405 & 1410 PREMIUM SERIES CHAIRS

Offers all you require in a task and operator chair. From molded foam cushions to "one touch" ergonomic chair controls.

- Gas lift height adjustment
- Back height and depth adjustment
- Seat and back angle adjustment on 1410 Series
- Optional arms and stool kit available
- Dual wheel carpet casters

Black onyx



Charcoal



**H** HORIZON  
SEATING

Model No.		Description	Adjustable	Seat Dimensions	Backrest Dimensions	Overall Dimensions	Price
Black Onyx	Charcoal		Height"	W" x D"	W" x H"	W" x D" x H"	/Each
OE744	OE745	1405 Series chair	18-22 3/4	17 1/2 x 17	17 x 14	18 1/2 x 22 x 36 3/4	243.00
OE746	OE747	1405 Series w/stool kit	25 1/2 - 30 1/4	17 1/2 x 17	17 x 14	23 1/2 x 22 x 44 1/4	316.00
OE748	OE749	1410 Series multi functional	16-23 1/2	19 x 18 1/2	17 1/2 x 15	24 1/2 x 23 1/2 x 38 1/2	324.00



OE744



OE748

## TASK CHAIRS & ECONOMICAL STENO CHAIRS

- Pneumatic height adjustments
- Backrest height adjustments
- Five prong nylon base
- Dual wheel carpet casters
- Stool kit available
- Optional arms
- Optional glides (recommended with stool kit)

Black onyx



Charcoal



**H** HORIZON  
SEATING

Model No.		Description	Adjustable Height"	Seat Dimensions W" x D"	Backrest Dimensions W" x H"	Overall Dimensions W" x D" x H"	Wt. lbs.	Price /Each
Black Onyx	Charcoal							
ECONOMICAL STENO CHAIRS								
OC310	OC309	w/o arms	28 1/2-36	18 x 17	16 1/2 x 11 1/2	20 1/4 x 23 x 36	30	236.00
OC312	-	w/T-arms	28 1/2-36	18 x 17	16 1/2 x 11 1/2	25 1/4 x 23 x 36	32	337.00
OE093	OE092	w/stool kit	36 - 41	18 x 17	16 1/2 x 11 1/2	20 1/4 x 23 x 41	35	306.00
TASK CHAIRS								
OE095	OE094	w/stool kit	40-45 1/2	19 x 18 1/2	17 1/2 x 15	23 1/2 x 22 x 45 1/2	35	390.00



OC312



OE095

## OPTIONS FOR CHAIRS



Model No. OA271  
Price/Each \$89.20  
Loop Arm Kit  
(width adjustable)



Model No. OC323  
Price/Each \$112.00  
T-Arm Kit (width and height adjustable)



Model No. OA269  
Price/Each \$78.50  
Stool Kit

## IBEX MULTI-TILTER ARM CHAIRS

- Ergonomic features include adjustable arm height, seat angle and seat height
- Comfortable air-flow mesh back
- Seat height: 17.5" to 21.5"
- Caster type: Dual wheel carpet casters
- Weight capacity: 300 lbs.
- Overall dimensions: 26" W x 27" D x 39.5" H



Model No.	Description	Price /Each
OP299	Black, Fabric	408.00
OP300	Charcoal, Fabric	408.00
OP301	Black, Vinyl	408.00
OP302	Charcoal, Vinyl	408.00



OP300



OP302

## SERENITY™ BIG & TALL LEATHER SEATING

- Designed especially for the big and tall person
- 500-lb. capacity
- Pneumatic seat height adjustment (measured from floor to top of seat): 19 1/2"-22 1/2" H
- Seat: 21 1/2" W x 22" D
- 360° swivel
- Tilt tension
- Back tilt lock
- 2 1/2" dual wheel carpet casters
- Black leather



Model No.	Description	Seat Dimensions			Back Dimensions		Price /Each
		W"	D"	H"	W"	H"	
ON715	High-back leather chair	26	x 26	x 45 1/2 - 48 1/2	22	x 26	831.00



ON715

## IBEX TASK CHAIRS

- Ergonomic features include adjustable arm height, seat height and seat depth
- Comfortable air-flow mesh back
- Seat height: 16" to 20"
- Caster type: Dual wheel carpet casters
- Weight capacity: 300 lbs.
- Overall dimensions: 26" W x 26.5" D x 37" H



Model No.	Description	Price /Each
OP288	Black, Fabric	324.00
OP303	Charcoal, Fabric	327.00
OP289	Black, Vinyl	327.00
OP304	Charcoal, Vinyl	327.00



OP288



OP304

## OBUSFORME® CHAIR

- Ergonomic "S" shape backrest offers continuous support and helps reduce back strain
- multi-tilter mechanism
- Tension, tilt movement, seat height, back height, seat depth, seat angle, back angle height, arms height and width are all adjustable
- Includes carpet casters
- Base Diameter: 26-1/2"
- Adjustable Seat Height: 16-1/2" to 20-1/2"
- Seat Width: 21"
- Adjustable Seat Depth: 17-1/2" to 20"
- Weight Capacity: 300 lbs.
- Colour: Black



Model No.	Overall Dimensions			Description	Material	Backrest Height"	Price /Each
	W"	D"	H"				
OP928	25	x 26	x 48	High Back Comfort	Polyester	27 to 32-1/5	591.00
OP929	25	x 26	x 48	High Back Comfort	Leather	27 to 32-1/5	638.00
OP930	25	x 26	x 44	Medium Back Comfort	Polyester	22 to 27-1/5	559.00



OP928



OP929

# SEATING

## ACTIV™ A-47 SYNCHRO OFFICE CHAIR

- Adjustable Height: 18" to 22.75"
- Seat Width: 19.5"
- Seat Depth: 19.5"
- Backrest Height: 24"
- Backrest Width: 18.25"
- Overall Dimensions: 25" W x 26-1/2" D x 45" H
- Weight Capacity: 250 lbs.
- Pneumatic seat height is easily adjustable
- Offers lumbar support
- Tilt-tension adjustment
- Height adjustable armrests
- Contoured foam seat cushion
- Material: Fabric
- Colour: Black



OQ961

**HORIZON SEATING**

Model No.	Description	Price/Each
OP795	Office Chair	390.00
OQ961	Office Chair w/Stool Kit	524.00

## ERA™ SERIES ADJUSTABLE OFFICE CHAIR

- Mid-height mesh back synchro-tilter
- Integrated adjustable lumbar support
- Seat and arms are height adjustable
- 4-position tilt-lock with tilt-tension adjustment
- Comes standard with carpet casters
- Colour: Black
- Material: Fabric, Mesh
- Weight Capacity: 250 lbs.
- Overall Dimensions: 20-1/2" W x 18-1/2" D x 42" H
- Lowered Overall Height: 37-3/4"
- Back Height: 21"
- Weight: 37 lbs.
- Manufacturer's Warranty: 5 Years
- Fabric Pattern: Opaque & Translucent Stripes



OQ966

**HORIZON SEATING**



Model No.	Colour	Price /Each
OQ965	Black	369.00
OQ966	Green	369.00
OQ967	Blue	369.00

## ACTIV™ SERIES SYNCHRO-TILT OFFICE CHAIR

- Pneumatic seat height adjustment
- Height adjustable lumbar support
- Tilt-tension adjustment
- Fixed backrest
- Synchronized seat and back movement
- Multi-position tilt-lock control
- Foam seat cushion
- Height adjustable armrests with urethane arm caps
- Dual wheel casters good for carpets or hard floors
- Colour: Black
- Material: Fabric, Mesh
- Weight Capacity: 250 lbs.
- Overall Dimensions: 25-1/2" W x 26" D x 43-1/2" H
- Lowered Overall Height: 40-3/4"
- Back Height: 24"



Model No. OQ963  
Price/Each \$329.00

**HORIZON SEATING**

## ACTIV™ A-128 OFFICE CHAIR

- Adjustable Height: 18" to 21"
- Seat Width: 20.5"
- Seat Depth: 20"
- Backrest Height: 26.5"
- Backrest Width: 20"
- Overall Dimensions: 25-3/4" W x 25" D x 44-3/4" H
- Weight Capacity: 250 lbs.
- Ergonomic built-in lumbar support allows increased relaxation of the back
- Pneumatic seat height is easily adjustable
- Tilt-tension adjustment
- Fixed style loop armrests
- Standard carpet casters are included
- Material: Polyurethane
- Colour: Black



Model No. OP796  
Price/Each \$200.00

**HORIZON SEATING**

## ACTIV® A-618 LEATHER MANAGER'S CHAIRS

- Thick padded and contoured seat and back for superior comfort
- Seat: 21 3/4" W x 21" D
- Backrest: 24" H x 21 1/2" W
- Overall dimensions: 25 1/4" W x 21 1/2" D x 46" H
- Back features built-in lumbar support which allows increased relaxation of the back
- Contoured armrests for increased support
- Pneumatic seat height adjustment from 43" to 46"
- A tilt mechanism with lockout
- Tension adjustment
- Contoured backrest shaped to fit the contours of the body
- Soft-touch leather like fabric



Model No. OK390  
Price/Each \$334.00

**HORIZON SEATING**

## ACTIV™ SERIES A-601 OFFICE CHAIR

- Easily adjustable seat height and tilt-tension control
- Includes fixed padded loop armrests and carpet casters
- High back
- Leather-like fabric
- Colour: Black
- Adjustable Seat Height: 18" to 21"
- Back height: 25.5"
- Seat Depth: 18.25"
- Seat Width: 19"
- Overall Dimensions: 24-1/2" W x 24" D x 46-1/2" H
- Weight Capacity: 250 lbs.

Model No. OP806  
Price/Each \$234.00



**HORIZON SEATING**



## OVERTIME HIGH BACK CHAIR

- Ideal for 24 hour application and intensive use
- Tension, tilt lock, seat height, back height, back angle, seat angle, arms height and width are all adjustable
- Memory foam top
- Dual wheel carpet casters included
- Pneumatic seat height adjustment
- Colour: Black
- Weight Capacity: 300 lbs.
- Overall Dimensions: 24-1/2" W x 26" D x 42" H
- Upholstery: Luxhide bonded leather
- Adjustable Seat Height: 17" to 21"



**HORIZON SEATING**



Model No.	Material	Price /Each
OP924	Leather	358.00
OP925	Fabric	358.00



## VUE™ ERGONOMIC STOOL

- High density seat and backrest cushions
- Ergonomic and height-adjustable seat that helps prevent fatigue
- Height Range: 39-1/2" to 49-1/2"
- Adjustable backrest and footrest
- Backrest Dimensions: 17" W x 15-1/2" H
- Backrest Material: Mesh
- Seat Dimensions: 18" W x 17-1/2" D
- Dual 2" wheel carpet casters
- Seat: 20" W x 19" D
- Overall dimensions: 25" W x 25" D x 49-1/2" H
- Weight Capacity: 250 lbs.
- Optional loop arms sold separately

**SAFCOACTIVE**



Model No.	Description	Price /Each
OP688	Black, Polyester	377.00
OP689	Black, Vinyl	377.00
OP690	Loop arms for Vue™	97.30



OP689



OP690

## CIERRA™ ERGONOMIC CHAIRS

- High density seat and backrest cushions
- Pneumatic, soft descent seat height adjustment, 19 - 23.75"
- Backrest height adjustment
- Independent, infinite position back and seat angle adjustment with tilt lock control
- Tilt-tension adjustment
- Forward seat tilt-lock control
- Seat depth adjustment (seat slider)
- Height adjustable T arms with soft urethane flat arm pad
- Seat: 20" W x 19" D
- Backrest: 24" H x 19" W
- Weight capacity: 250 lbs.
- Overall dimensions: 20" W x 19" D x 46-1/2" H



**HORIZON SEATING**

Model No.	Description	Price /Each
OP253	Black, Fabric	598.00
OP254	Blue, Fabric	598.00
OP255	Grey, Fabric	598.00



OP254

## VUE™ HEAVY-DUTY STOOL

- Big & tall heavy-duty stool
- Swivel tilt mechanism accommodates users of all sizes
- Mesh back with ample support and ergonomic shaping
- Adjustable backrest and footrest
- Height Range: 39" to 48-1/2"
- Backrest Dimensions: 13-3/4" W x 18" H
- Seat Dimensions: 20-1/2" W x 20" D
- Dual 2-1/2" wheel carpet casters
- Overall dimensions: 26" W x 26" D x 48-1/2" H
- Weight Capacity: 350 lbs.
- Optional T-pad height and width adjustable arms

**SAFCOACTIVE**



Model No.	Description	Price /Each
OP686	Black, Nylon	594.00
OP687	Black, Vinyl	594.00
ON713	T-pad arm kit	115.00



OP686



ON713

## METRO™ EXTENDED-HIGH CHAIR

- Swivel mechanism with adjustable back tilt tension accommodates users of all sizes
- Height Range: 23" to 33"
- Backrest Dimensions: 17-1/2" W x 16" H
- Seat Dimensions: 18-1/4" W x 17" D
- Overall dimensions: 26" W x 26" D x 49" H
- Weight Capacity: 250 lbs.
- Dual 2-1/2" wheel hooded carpet casters
- Optional adjustable arms sold separately

**SAFCOACTIVE**



Model No.	Description	Price /Each
OP692	Black, Fabric	392.00
OP693	Black, Vinyl	392.00
OP954	Adj. Height Arms	113.00



OP692



OP954

## LEATHER CHAIRS

- High back tilter with pneumatic seat height adjustment from 16" to 20"
- Upright position tilt lock with tension control knob
- Dual wheel carpet casters for easy movement on carpet
- Black leather seat with mock leather back and trim
- Ideal for home or office
- Dimensions: 25 1/2" W x 28" D x 43" H

Model No. OK049

Price/Each \$207.00



## TASK CHAIR

- Pneumatic seat height adjustment with a hinged back that changes angle to suit the users' body shape
- Scuff resistant outer shroud protects the back of the chair and adds support
- Dual wheel carpet casters provide easy movement on carpet floors;
- Ideal for office or home
- Charcoal grey
- Dimensions: 18" W x 22" D x 32" H;
- Adjustable seat height: 15.5" to 20.5";
- Colour: Charcoal
- Casters: Dual Wheel
- Style: T-Arms

Model No. OK044

Mfg. No. MVL1617 QL11 BLK

Price/Each \$193.00



## SIX 31 OPERATOR CHAIR

- Tension, tilt lock, seat height, back height, back angle, and arms height are all adjustable
- Durable "T" style arms
- Pneumatic seat height adjustment
- Adjustable Seat Height: 18-1/2" to 22-1/2"
- Material: Fabric
- Colour: Black
- Overall dimensions: 25-1/2" W x 25" D x 44" H
- Weight Capacity: 250 lbs.
- Dual wheel carpet casters included

Model No. OP926

Price/Each \$269.00



# SEATING

## SWIVEL STOOLS

- Seats made of 19-gauge embossed steel with 1/8" tempered hardboard inlay
- 1" diameter, 16-gauge steel frame all-welded tubing
- Circular 18-gauge footrest guarantees comfort and stability
- Heavy-duty rubber cushioned steel glides protect floors
- 1" x 14 1/2" long steel adjustment stem for easy height selection on all units
- Models **FC661** and **FC665** have 9 1/2" x 15 3/4" 4-way adjustable backrest
- Optional casters available: **FC675**
- Models **FC673** and **FC674** come with a padded seat



FC658



FC661



FC665



FC673



MUR-VAN MANUFACTURING

Model No.	Adjustable Height"	Seat Dimensions"	Price /Each
FC658	22-28	14	177.00
FC661	22-28	14	247.00
FC665	17-23	14 1/2 x 15	270.00
FC673	20-26	14	230.00
FC674	25-31	14	230.00
FC675	Set of 4 casters	-	38.60

## DELUXE SWIVEL STOOLS



MUR-VAN MANUFACTURING

- These padded stools will provide workers with maximum comfort and support
- 360° swivel motion is ideal for workers who have repetitive side to side movement
- Seat easily adjusts to your selected height, just raise or lower the steel rod and lock securely in place
- 2" foam over a 1/2" plywood base and 1/2" foamed backrest
- All-welded frame constructed of 1" diameter 16-gauge steel
- 3/4" circular tube footrest
- Four leg cluster design has a 22" spread giving them optimum stability
- Black vinyl upholstery with a royal grey frame
- Optional casters available

Model **OJ905** has an ergonomic self-skinned molded polyurethane foam seat and back, features lumbar support, waterfall seat and 4-leg frame for superior comfort and durability.



FC670



OJ905



Model No.	Adjustable Height"	Seat Dimensions"	Price /Each
OJ905	25-31	19 x 17	442.00
FC670	25-31	19 x 17	289.00
FC675	Set of 4 casters	-	38.60

## STEEL BASE SWIVEL STOOLS

- 5" pneumatic lift of 25" to 30", for easy height adjustment
- Five legs and an all-welded steel base, gives optimum stability
- 16-gauge, 1" diameter steel legs
- Full 360° rotation
- Colour: Powder coated black Santex
- Optional casters are available



OJ974



OJ975



MUR-VAN MANUFACTURING

Model No.	Upholstery Seat	Dimensions"	Price /Each
OJ973	Vinyl and foam-padded seat and back	19 x 17	267.00
OJ974	Polyurethane seat and back	18 x 17	347.00
OJ975	Premium self skinned polyurethane seat and back	19 x 18	426.00
OJ976	Optional set of 5 tile casters (includes leg insert socket)		48.20

## POLYPROPYLENE SWIVEL STOOLS

- 360° swivel
- Constructed of 1" diameter 16-gauge tubular steel base
- 17" x 16 1/2" sturdy polypropylene seat
- **OA241** comes with a 4-leg base and manual height control from 22" to 28" – simply raise or lower the steel rod and lock securely into place
- **ON563/ON564** comes with a 5-leg glass reinforced nylon base and nylon foot ring
- **ON563/ON564** features pneumatic height control from 21" to 28"



MUR-VAN MANUFACTURING

Model No.	Description	Price /Each
OA241	4-leg base with glides	345.00
ON563	5-leg base with glides	343.00
ON564	5-leg base with casters	339.00



OA241



ON564

## INDUSTRIAL SEATING

- Features a full 8" of pneumatic lift while seated
- Exclusive extension tube provides an adjustable height range of 17" to 35"
- Seats and backs are microcellular self skinning polyurethane foam which inhibits punctures, tears and moisture absorption
- Large 26" dia. five leg steel base with 2 1/2" diameter glides ensure stability and safety even at the highest levels
- Large wide angle footrests make it easy to step up into seat



FC680

Features 22" back angle and 10" seat tilt adjustment w/double paddle handles.



FC681

Features 3" back rest height and 3" back rest depth adjustment. Assembly required.



Model No.	Seat"	Dimensions Backrest"	No. of Footrests	Price /Each
FC680	18 1/2 x 17	15 3/4 x 9	3	840.00
FC681	16 1/4 x 16 1/4	14 1/2 x 9	1	574.00

## STATIONARY & ADJUSTABLE HEIGHT STOOLS

- Ruggedly built for long lasting service in a warehouse factory or office
- All-welded frame is a 7/8" dia. steel tube
- Legs are braced with a 3/4" 18-gauge circular footrest for increased strength and stability
- 14" diameter embossed steel seat has a 1/8" tempered hardboard inlay
- Model **FC656** has a 14 1/2" x 15" sq. seat and is reinforced by steel bars
- All stools have four chrome floor glides that won't damage floors
- On the adjustable models the telescopic legs have screw locks that adjust on 1" increments
- Contoured back rest constructed of 19-gauge steel
- Colour: Royal grey



STATIONARY HEIGHT

Model No.	Seat Height"	Dim."	Wt. lbs.	Price /Each
A. FC649	24	14	20	169.00
B. FC647	24	14	12	90.70
B. FC648	30	14	14	90.70

ADJUSTABLE HEIGHT

Model No.	Seat Height"	Dim."	Wt. lbs.	Price /Each
C. FC653	25-33	14	12	108.00
D. FC655	25-33	14	20	186.00
E. FC656	18-26	14 1/2 x 15	18	200.00



## POLYURETHANE SEAT STOOLS

- Maximum comfort, durable economical stools with self-skinned polyurethane padded seat
- Easy to maintain in any environment
- 14" dia. seats mount to stationary, adjustable or swivel stools of various heights for your convenience
- Sit/stand seats (**OG389**, **OG390**) offer an ergonomic molded polyurethane seat, mounted on a sturdy 4-leg steel base



## HEAVY-DUTY ERGONOMIC POLYURETHANE SEATING

- Pneumatic seat height adjustment
- Self skinned 18" x 17" polyurethane seat and back offers stain and puncture resistance
- Sturdy 5-leg, glass reinforced, nylon black base
- Manual vertical back adjustment with built-in lumbar support
- 3 levers, tilt seat, tilt back
- Waterfall edge seat design for greater comfort
- Choice of 2" swivel carpet casters or glides



Model No.	Description	Adjustable Height"	Seat Dimensions"	Price /Each
<b>OG385</b>	Fixed Seat	18 - 26	13 1/2 x 1 1/2	159.00
<b>OG386</b>	Fixed Seat	25 - 33	13 1/2 x 1 1/2	159.00
<b>OG387</b>	Swivel Seat	23 - 30	13 1/2 x 1 1/2	236.00
<b>OG388</b>	Swivel Seat	28 - 35	13 1/2 x 1 1/2	238.00
<b>OG389</b>	Shaped Sit/Stand Seat	18 - 26	13 x 9 x 2	186.00
<b>OG390</b>	Shaped Sit/Stand Seat	25 - 33	13 x 9 x 2	188.00

Model No.	Description	Adjustable Height"	Price /Each
<b>OJ963</b>	Ergonomic seating with carpet casters	16 - 22	308.00
<b>OJ966</b>	Ergonomic seating with glides	16 - 22	308.00
<b>OJ964</b>	Ergonomic seating with carpet casters	20 - 28	392.00
<b>OJ967</b>	Ergonomic seating with glides	20 - 28	388.00
<b>OJ965</b>	Ergonomic seating with carpet casters	23 - 33	394.00
<b>OJ968</b>	Ergonomic seating with glides	23 - 33	394.00

## STENO CHAIRS

- A heavy-duty industrial chair at an economical price
- Comfortable 2 1/2" foam-upholstered seat with a full 360° rotation
- Padded backrest with a floating spring action back hinge
- Standard black vinyl upholstery
- A five prong base for increased stability
- Height adjustment from 17" to 22"
- Includes: Five swivel black nylon, twin wheel carpet casters



Model No.	Colour	Price /Each
<b>OA276</b>	Black	210.00

## DRAFTING STOOLS

- Designed with a contoured seat and back
- 3-way back adjustment provides user comfort
- Seat and back are made with a solid 3/4" plywood frame
- Standard 100% polypropylene black fabric upholstery
- One piece durable plastic base with nylon footrest
- Two pneumatic gas levers simplifies height adjustment from 23" to 33" and ergonomic tilt
- Includes: Five swivel black nylon, twin wheel carpet casters



Model No.	Colour	Price /Each
<b>OA286</b>	Black	375.00

## MID BACK DRAFTING/TASK CHAIRS

- Contoured foam seat 20" x 18 1/2"
- Back dimensions 18" x 19" with integral ergo support
- Standard 100% polypropylene black fabric upholstery
- 5-leg glass reinforced nylon base
- Height adjustment 16"-22"
- Multi function type seat mechanism
- T-arms



Model No.	Colour	Price /Each
<b>ON565</b>	Black	450.00



# SEATING

## ERGONOMIC INDUSTRIAL SHOP SEATING

- Industrial chairs featuring comfortable and supportive seating that is easy to clean
- Seats made of a soft molded polyurethane material, backs formed to support the body for greater comfort and less fatigue
- Adjustable back rest
- Nylon base with dual wheel hard floor casters
- Optional chrome foot ring
- Glides recommended with foot ring
- Model **OC816** and **OC821** task chairs have adjustable backrest height, depth and angle
- Optional stool kit model **OC822**



OC815



OC816



Model No.	Description	Adjustable Height"	Wt. lbs.	Price /Each
<b>W/CASTERS</b>				
OC815	Operator's chair	27-32 1/2	25	393.00
OC816	Task chair	27-32 1/2	26.5	422.00
NH450	Operator's chair w/stool kit	34-44	30	517.00
NH451	Task chair w/stool kit	34-44	31.5	556.00
<b>W/GLIDES</b>				
OC820	Operator's chair	27-32 1/2	25	410.00
OC821	Task chair	27-32 1/2	26.5	440.00
NH452	Operator's chair w/stool kit	34-44	30	544.00
NH453	Task chair w/stool kit	34-44	31.5	563.00

## SHOPTECH ERGONOMIC INDUSTRIAL STOOLS

- Industrial seating that brings ergonomic comfort and productivity to the shop floor, the laboratory or the shipping office
- Durable, easy-to-clean, molded polyurethane seating is the perfect solution for clean rooms or wipe down applications
- Overall height of 16" to 21 1/2" with a 19" wide by 14" deep seat



Model No.	Description	Wt. lbs.	Price /Each
OE888	Stool	20	264.00

## ESD (ELECTROSTATIC DISSIPATIVE) SHOPTECH SEATING

- Engineered to control discharge of static electricity by "wicking" static away from the user, sensitive electronic components and volatile chemicals and materials
- Seat 19" W x 18" D
- Backrest 18" W x 18" H
- Independent, infinite position back and seat angle adjustment with tilt lock control
- Tilt-tension adjustment
- Forward seat tilt-lock control
- Polished aluminum base and chromed gas cylinder
- Casters are coated with conductive urethane and are suitable for hard floors



ON700



Model No.	Description	Price /Each
ON700*	Black fabric ESD chair	986.00
ON701*	Blue fabric ESD chair	986.00
ON702*	Black vinyl ESD chair	986.00
ON703**	Black fabric ESD chair with adjustable footring	1139.00
ON704**	Blue fabric ESD chair with adjustable footring	1139.00
ON705**	Black vinyl ESD chair with adjustable footring	1139.00

\*Adjustable seat height: 19" to 23-3/4"

\*\*Adjustable seat height: 23-1/2" to 31-1/4"



ON703

## SIT/STAND STOOLS

- Sit/stand stools dramatically reduce fatigue for workers unable to sit down on the job
- Can be positioned for up close work
- Model **FC683** heavy gauge triangular glides provide safety, features a built-in footrest, a 14" wide x 13" deep self skinning polyurethane seat mounted to an adjustable spring suspension frame that automatically tilts forward up to 15° while in use
- Removable seat attaches to frame with a double pin locking system which easily adjusts to 10 positions from 21" to 35"
- Model **FC685** features a sturdy, tip proof 5-leg base with a padded comfortable "Bicycle style" seat
- Pneumatic height adjustment from 23 1/2" to 33 1/2"

FC685



MUR-VAN MANUFACTURING

FC683



Model No.	Description	Price /Each
FC683	Manual adjustment	486.00
FC685	Pneumatic adjustment	243.00

## ERGONOMIC SEATING

- Designed for the industrial work place, food industry, or any application
- Provides workers with dynamic seating necessary for the maintenance of health and productivity
- Premium black self-skinned integral molded polyurethane foam seat and back for durability and ease of maintenance
- Stool features proper lumbar support, swivel and water-fall seat and three pneumatic height adjustments
- 3 levers, tilt seat, tilt back



MUR-VAN MANUFACTURING



FC677



Model No.	Description	Adjustable Height"	Price /Each
<b>2" SWIVEL CARPET CASTERS</b>			
FC677	No footring	16 - 22	433.00
FC678	Footring	20 - 29	503.00
FC679	Footring	23 - 33	506.00
<b>W/GLIDES</b>			
OD513	No footring	16 - 22	433.00
OD514	Footring	20 - 29	508.00
OD515	Footring	23 - 33	510.00

OD515



## ESD (ELECTROSTATIC DISSIPATIVE) LOW BACK TASK CHAIR STOOLS

- 10" pneumatic seat height adjustment (20" to 30") with a contoured, black polyurethane seat and back
- Articulating hinged back provides support
- Seat depth adjustment enables proper back to front seat support
- Footring, back upright and cylinder are chromed to provide a clean environment
- Ideal for electronic labs or defence industries who require furniture designed to direct static electricity away from delicate equipment, components, or chemicals
- Dimensions: 18" W x 20 1/2" D x 42" H

Model No. **OK046**  
Price/Each **\$570.00**





## TA180 ERGONOMIC STOOLS

- Ergonomic stool that improves user comfort and reduces foot and leg pain due to prolonged standing
- Ideal for users that need freedom of movement
- Base is equipped with non-skid pads
- Dual-density cushions and closed-cell foam padding
- Seat: 12" W x 10" D
- Standard pneumatic lift: 26.75" to 36.75"
- Weight capacity: 300 lbs.
- Overall dimensions 22" W x 16" D x 27" H



Model No.	Description	Material	Colour	Price /Each
OP276	Industrial Grade	Vinyl	Black/Grey	458.00

## TF180 ERGONOMIC STOOLS

- Ergonomic stool with a larger seat that improves workers' comfort
- Reduces lumbar muscular effort
- Padding: Dual-density cushions and closed-cell foam
- Standard pneumatic lift: 20.5" to 28.25"
- Dimensions of backrest: 15.5" W x 14" H
- Dimensions of seat: 18.5" W x 16" D
- Five 3" caster wheels that are adaptable to all surfaces
- Weight capacity: 300 lbs.
- Overall dimensions: 28" W x 28" D x 33" H



Model No.	Description	Material	Colour	Price /Each
OP241	Industrial Grade	Vinyl	Black/Grey	732.00

## SYNERGO I ERGONOMIC CHAIR

- Reduces muscle effort by promoting correct body alignment and posture
- Adjustable seat height and backrest provides optimal back support for users of different sizes
- Dual-density cushions and closed-cell foam padding
- Easy to maintain black/grey antibacterial and antistatic vinyl
- Five 3" caster wheels that are adaptable to all surfaces
- Standard Pneumatic Lift: 18" to 21"
- Seat Dimension: 18.5" W x 18" D
- Backrest Dimension: 17" W x 24" H
- Weight Capacity: 300 lbs.
- Overall Dimensions: 45" W x 28" D x 28" H



Model No.	Description	Material	Colour	Price /Each
OP510	Industrial Grade	Vinyl	Black/Grey	924.00

## SYNERGO II ERGONOMIC CHAIRS

- Ergonomic chair that provides excellent working posture and reduces muscular effort
- Ideal for multiple shifts and 24-hour use
- Five 3" caster wheels adaptable to all surfaces
- Dual-density cushions and closed-cell foam padding
- Backrest: 17" W x 21.5" H
- Seat: 18.5" W x 18" D
- Standard pneumatic lift: 18" to 21"
- Weight capacity: 300 lbs.
- Overall dimensions: 28" W x 28" D x 40.5" H



Model No.	Description	Material	Colour	Price /Each
OP280	Industrial Grade	Vinyl	Black/Grey	1098.00

## FLEX ERGONOMIC CHAIRS

- Ergonomic chair that reduces pressure sensations felt in the buttocks, wrists and lumbar region
- Reduces fatigue by limiting muscular effort
- Five 3" caster wheels adaptable to all surfaces
- Dual-density cushions and closed-cell foam padding
- Backrest: 12" W x 15.5" H
- Seat: 15" D x 18" W
- Standard pneumatic lift: 18.5" to 23.5"
- Weight capacity: 300 lbs.
- Overall dimensions: 17" W x 19" D x 21" H



Model No.	Description	Material	Colour	Price /Each
OP274	Industrial Grade	Vinyl	Black/Grey	637.00

## SF180 ERGONOMIC STOOLS

- Ergonomic stool with a larger seat that improves workers' comfort
- Reduces lumbar muscular effort
- Five 3" caster wheels adaptable to all surfaces
- Dual-density cushions and closed-cell foam padding
- Backrest: 15.5" W x 14" H
- Seat: 16" D x 18.5" W
- Standard pneumatic lift: 18.75" to 24"
- Weight capacity: 300 lbs.
- Overall dimensions: 25" W x 25" D x 36" H



Model No.	Description	Material	Colour	Price /Each
OP278	Industrial Grade	Vinyl	Black/Grey	687.00

## STAG4 ERGONOMIC BENCHES

- Ergonomic seat allows users to work in a kneeling position with comfort
- Reduces pressure sensations felt in the knees, ankles and lumbar region
- One lever mechanism for seat height adjustment and 20° adjustable slope for kneeling position
- Padding: Dual-density cushions and closed-cell foam
- Standard pneumatic lift: 17.5" to 22.5"
- Knees: 8.5" W x 15.5" D
- Dimensions of seat: 12.5" W x 12" D
- Five 3" caster wheel adaptable to all surfaces
- Includes tool tray
- Weight capacity: 300 lbs.
- Overall dimensions: 28" W x 20" D x 21" H



Model No.	Description	Material	Colour	Price /Each
OG347	Industrial Grade	Vinyl	Black/Grey	620.00

## TA300 ERGONOMIC CHAIR

- Improves comfort while working on elevated surfaces
- The backrest provides support and reduces muscular fatigue and discomfort
- Dual-density cushions and closed-cell foam padding
- Easy to maintain black/grey antibacterial and antistatic vinyl
- Standard Pneumatic Lift: 24.5" to 34.5"
- Seat Dimension: 11.5" W x 10.5" D
- Backrest Dimension: 12.5" W x 10.5" H
- Overall Dimensions: 51" W x 16-1/2" D x 21" H



Model No.	Description	Material	Colour	Price /Each
OP496	Industrial Grade	Vinyl	Black/Grey	521.00

# SEATING

## SPECIALTY STOOLS

- Designed specifically for laboratories and medical offices
- Available with 14" diameter, 3" high vinyl or fabric covered seat
- Pneumatic mechanism to adjust the height
- Full foot ring is standard on stools except for models **OC785**, **OC791** and **OC788**
- Choice of casters or glides available



Model No.	Fabric	Adjustable Height"	Wt. lbs.	Price /Each
<b>CASTERS</b>				
<b>OC785</b>	<b>OC791</b>	16 - 22	14	<b>144.00</b>
<b>GLIDES</b>				
<b>OC788</b>	-	16 - 22	14	<b>144.00</b>
<b>OC819</b>	-	Optional Foot Ring		<b>70.70</b>

## PNEUMATIC SWIVEL STOOLS

- 5" gas lift
  - Height adjustable from 15" to 20 1/2"
  - Black select vinyl
  - Weight: 17 lbs.
  - Model No. **OD846**
  - Price/Each **\$180.00**
- 10" gas lift
  - Height adjustable from 22" to 32"
  - Options SKR18 footring
  - Weight: 17 lbs.
  - Model No. **OD847**
  - Price/Each **\$221.00**



## POLYETHYLENE FOLDING CHAIRS

- Dimensions: 18 3/4" W x 16 1/2" D x 35" H
- Durable contoured back and seat for all day comfort
- Steel framing and folding legs for extra strength
- Easy to clean
- Capacity: 350 lbs.



Model No.	Description	Price /Each
<b>ON602</b>	White	<b>54.60</b>
<b>OP448</b>	Black	<b>55.65</b>
<b>OP449</b>	Blue	<b>55.65</b>

## ACTIV™ A-20 GUEST CHAIR

- Breathable mesh back
- Padded seat for comfort
- Seat Width: 18.5"
- Seat Depth: 19.5"
- Backrest Height: 16"
- Weight Capacity: 250 lbs.
- Overall Dimensions: 22-1/2" W x 22-1/2" D x 31" H

Model No. **OP794**  
Price/Each **\$200.00**



## STEEL FOLDING CHAIR

- Folding frame saves space
- Easy to transport
- Easy to clean
- Overall dimensions: 18" W x 17-3/4" D x 30-3/4" H
- Weight Capacity: 300 lbs.
- 16 gauge steel
- Double riveted cross braces



Model No.	Colour	Material	Description	Price /Each
<b>OP960</b>	Black	Steel	-	<b>33.50</b>
<b>OP961</b>	Beige	Steel	-	<b>33.35</b>
<b>OP962</b>	Black	Steel	Vinyl Padded Chair for Extra Comfort	<b>40.10</b>
<b>OP963</b>	Beige	Steel	Vinyl Padded Chair for Extra Comfort	<b>40.10</b>

## DOUBLE-SIDED FOLDING CHAIR CADDY

- Holds up to 72 Kleton polyethylene folding chairs OR up to 84 Kleton steel folding chairs
- Easy to maneuver with 4", non-marking, blue, rubber swivel casters
- All-welded steel construction arrives ready to use
- Overall dimensions: 64-1/2" L x 35-1/2" W x 73" H
- Colour: Black
- Weight: 98 lbs.

Model No. **OQ768**  
Price/Each **\$799.00**



## MINTO ARMLESS STACKING CHAIRS

- Ergonomic features include waterfall seats and contoured cushions
- Stacks 5 high
- Material: Fabric
- Weight Capacity: 300 lbs.
- Seat Height: 18"
- Overall Dimensions: 22-1/2" W x 19-1/2" D x 32" H
- Frame: Round Tube Steel



Model No.	Mfg. No.	Colour	Price /Each
<b>OP319</b>	MVL2748 JN02 BLK	Black	<b>115.00</b>
<b>OP320</b>	MVL2748 JN11 BLK	Charcoal	<b>115.00</b>



## SONIC™ ARMLESS STACKING CHAIRS

- Ideal for meeting rooms, guest seating, and food facilities
- Durable molded seat and back
- Material: Plastic
- Includes standard black glides
- Frame Construction: 16 ga. steel
- Frame Finish: Chrome
- Seat Height: 18"
- Backrest Height: 18"
- Seat Width: 17"
- Seat Depth: 16"
- Weight Capacity: 300 lbs.
- Overall Dimensions: 21-1/2" W x 21-1/2" D x 33" H
- Stacks up to five high on floor or 10 high on chair dolly

global



OP931

Model No.	Colour	Price /Each
OP931	Blue	125.00
OP932	Grey	125.00
OP315	Black	125.00

## KEY® CHAIR

- Chairs can be nested for easy storage and transport
- Frame Finish: Chrome
- Material: Fabric
- Colour: Black
- Overall Dimensions: 23-1/2" W x 18-1/5" D x 30" H
- Weight Capacity: 200 lbs.
- Stacks 13 high on the floor or 15 high on chair dolly

global



OP936

Model No.	Description	Price /Each
OP936	Armless	114.00
OP937	Black Polyurethane Armrests	126.00

## IBEX GUEST CHAIRS

- Comes standard with 4 dual wheel casters
- Comfortable air-flow mesh back
- Seat height: 17.5"
- Weight capacity: 300 lbs.
- Overall dimensions: 20" W x 24" D x 34.5" H

global



OP305

Model No.	Description	Price /Each
OP305	Armless, Black, Fabric	312.00
OP306	Armless, Charcoal, Fabric	312.00
OP307	Armless, Black, Vinyl	312.00
OP308	Armless, Charcoal, Vinyl	312.00
OP309	Black, Fabric	323.00
OP310	Charcoal, Fabric	323.00
OP311	Black, Vinyl	323.00
OP312	Charcoal, Vinyl	323.00



OP311

## POPCORN™ CHAIR

- Ideal for conference areas, cafeterias, classrooms, and healthcare spaces
- Flexible backrest offers support and continuous comfort
- Frame Finish: Chrome
- Material: Plastic
- Weight Capacity: 300 lbs.
- Seat Height: 16-1/2"
- Backrest Height: 16"
- Seat Width: 18"
- Seat Depth: 18"
- Overall Dimensions: 23-1/2" W x 20" D x 32-1/2" H
- Stacks up to 10 high on floor or 34 high on chair dolly

OP933



global

Model No.	Colour	Price /Each
OP933	Black	122.00
OP934	Blue	122.00
OP935	Grey	122.00

## STACKING CHAIRS

### A117

- Standard black with grey vein powder coated frame
- 18 gauge 22" x 22" steel frame
- Additional support bar under the seat
- Stacks 10 high
- Seat: 15" W x 15.5" D
- Backrest: 17" W x 20" H
- Overall dimensions: 17.25" W x 18" D x 37" H

OP260



HORIZON SEATING

Model No.	Description	Weight Capacity lbs.	Price /Each
OP260	Black, Vinyl	300	86.50
OP261	Black, Fabric	250	86.50

### VENTURA

- Weighs only seven pounds and is surprisingly strong
- 7/8" tubular steel frame is in the shape of an X under the seat giving rigidity and strength to the unit
- Moulded polypropylene seat and back with a texture finish
- Glides are insert type and will not mark floors
- Will stack with most plywood stacking chairs
- 18" seat height



OD920

OD919

VENREZ

Model No.	Frame Colour	Back and Seat Colour	Price /Each
OD919	Beige	Navy	51.90
OD920	Beige	Grey	51.90

### HORIZON CHAIRS

- Incredibly strong and durable thermoplastic shell which assures correct posture and provides maximum comfort for sustained periods of sitting
- Arched back with sculptured cut-out provides excellent ventilation
- Heavy-duty welded, unitized chassis designed to enable stacking yet avoids protruding legs
- Legs made of 16-gauge tubular steel
- Heavy 14-gauge channel cross braces provide anchor points for the shell
- Frame is black
- Seat height: 18"



OD925

VENREZ

Model No.	Colour	Price /Each
OD925	Blue	69.90
OD933	Black	69.90

# SEATING

## ADJUSTABLE FOOTREST

- Fixed at a comfortable 8° angle to relieve muscle strain
- Removable 14-gauge platform has nine elevation positions which lock into place with a double locking pin
- Black powder coat paint finish and textured anti-slip covering on the platform
- Dimensions: 20" W x 12" D x 5.5" to 15" H

**Model No. FC684**  
**Price/Each \$246.00**



## FOOTREST

- Weight Capacity: 300 lbs.
- Raised ridges provide a non-slip surface to rest your feet
- Pairs with any Safco Active desk, table or seat
- Helps improve circulation and remove pressure from feet and back
- Colour: Black
- Overall Height: 3-1/2"
- Overall Width: 14"
- Overall Length: 26"

**Model No. OP704**  
**Price/Each \$116.00**



## ADJUSTABLE FOOTREST

- Surface covered by anti-slip rubber mat
- Easily adjustable folding support legs provide platform tilt
- Provides support when chair adjustment is not adequate
- Black finish with grey accents
- Colour: Black, Grey
- Overall dimensions: 16" W x 12" D x 4" H
- Platform tilt: 6°, 12°, 18° and 25°

**Model No. OQ886**  
**Price/Each \$75.80**



## ADJUSTABLE FOOTREST

- Grey surface with black bars
- Infinite tilt angle adjustment
- Provides support when chair adjustment is not adequate
- Colour: Black/Grey
- Overall dimensions: 16-1/4" W x 12" D x 2" H

**Model No. OQ887**  
**Price/Each \$61.60**



## STEP STOOLS

- Tough one piece poly construction with anti-skid bottom
- Threaded top and expanded step
- 16" diameter base provides added stability
- Glides easily on retractable rubber casters
- 13" overall height
- Capacity: 300 lbs.
- Weight: 7 lbs.



Model No.	Colour	Price /Each
0A299	Black	171.02
0A300	Beige	171.02



## HEAVY-DUTY STEEL STEP STOOL

- Comes with a double platform with non-slip rubber tread
- Spring-loaded casters retract under slight pressure, forcing base to the floor
- 11" diameter upper platform and 13 1/2" diameter lower platform
- 17 1/4" diameter base has an all-around protective bumper
- 16 1/2" overall height
- Capacity: 330 lbs.
- Colour: Black

**Model No. ON528**  
**Price/Each \$89.45**



## POLYPROPYLENE FOLDING BENCH

- Durable high-density polypropylene construction
- Steel framing and folding legs for extra strength
- Dimensions: 72" L x 12" W x 17" H
- Folded dimensions: 36" L x 12" W x 4" H
- Weight: 20 lbs.

**Model No. ON699**  
**Price/Each \$99.95**





## CAFETERIA TABLES

- 1 1/8" thermally fused walnut finish laminate
- Self-edged top with a black metal skirt
- Chromed legs have adjustable feet glides
- Ideal for cafeteria or work table

global

Model No.	Top Size L" x W"	Price /Each
OK050	60 x 30	337.00
OK051	72 x 30	379.00
OK052	72 x 36	386.00



## CAFETERIA TABLES

- General purpose tables with metal X base
- Sandtex finish for durability
- Adjustable leveling guides
- Ships in two cartons
- Length: 36"
- Width: 36"
- Height: 29-1/2"
- Top Thickness: 1"
- Table Top Colour: Grey/White
- Table Material: Laminate
- Column Dimensions: 2.5" x 2.5"
- Cross Bar Dimensions: 1" W x 2" H
- Leg Finish: Tungsten
- Table Top Colour: Absolute Acajou

OfficestoGo

OQ945

OQ946

Model No.	Table Shape	Price /Each
OQ945	Round	308.00
OQ946	Square	308.00



## FOLDING TABLES

- 5/8" thick tops
- Durable walnut colour plastic laminate finish
- Folding legs and perimeter metal frame constructed of 16-gauge brown enamel steel
- Table height: 29"

Rodo Industries Inc.

Model No.	Top Size L" x W"	Price /Each
OA948	72 x 36	400.00
OA304	60" Diameter	575.00



## EDGE STACKING CADDIES

- For rectangular or round tables
- Ideal for tables of all widths especially wider than 30" that must fit through a narrow doorway
- 14-gauge steel tubing with a black finish
- Shipping weight: 65 lbs.

MIDWEST

Model No.	Used Wwith	Dimensions L" x W" x H"	Table Capacity	Price /Each
OG344	Rectangular	49 x 31 1/4 x 32 1/4	10	999.00
OG340	Round	49 x 31 1/4 x 41 1/4	8	999.00



## POLYETHYLENE FOLDING TABLE

- Folding legs automatically lock by use of gravity-activated mechanism when opened
- Lightweight with folding legs for easy storage
- Blow-molded high-density polyethylene top
- Capacity: 395 lbs.
- Top Thickness: 2"
- Table Top Colour: White
- Table Shape: Round

KLETON



Model No.	Seats	Dimensions L" x W" x H"	Wt lbs.	Price /Each
Q320	6-8 people	48 x 48 x 29	15	147.00
Q321	8-10 people	60 x 60 x 29	20	200.00

## POLYETHYLENE FOLDING TABLES

- Lightweight with folding legs for easy storage
- Blow-molded polyethylene top
- Easy to clean
- Seats four people
- Length: 34"
- Width: 34"
- Height: 29"
- Top Thickness: 1-3/4"
- Table Top Colour: White
- Capacity: 250 lbs.
- Weight: 20 lbs.

KLETON



Model No.	Table Shape	Price /Each
Q714	Square	93.45



## POLYETHYLENE FOLDING TABLES

- Blow molded polypropylene top
- Lightweight with folding legs for easy storage
- 29" fixed table height with locking steel legs
- Easy to clean
- Folding legs automatically lock by use of gravity activated mechanism when opened
- Capacity: 500 lbs.



Model No.	Dimensions L" x W" x H"	Wt. lbs.	Price /Each
ON598	48 x 24 x 29	22	91.65
ON599	72 x 30 x 29	35	129.00
ON600	96 x 30 x 29	50	192.00

KLETON

## POLYETHYLENE FOLD-IN-HALF TABLES

- Blow-molded polypropylene top
- Lightweight with ability to fold the table in half to 3 1/2" thick for easy storage
- 29" fixed table height with locking steel legs
- Folding legs automatically lock by use of gravity activated mechanism when opened
- Easy to clean
- Dimensions: 72" L x 30" W x 29" H
- Capacity: 350 lbs.
- Model No. ON601
- Price/Each \$127.00



KLETON

# TABLES

## ADJUSTABLE STAND-UP WORKSTATIONS

- Mobile and adjustable for comfort and productivity
- Effortless crank adjustment from sitting to standing
- Promotes better posture, reduced back and neck pain, a thinner waist line and other health benefits
- Caster Type: Four 3" furniture grade, two with locking brakes
- Includes all hardware and tools required for assembly



**LUXOR**

Model No.	Table Finish	Base Finish	Overall Dimensions				Height Range"	Price /Each	
			H"	x	W"	x			D"
OP282	Walnut	Silver	42-3/4	x	47-1/4	x	29-1/2	29 - 42 3/4	959.00
OP283	Walnut	Silver	42-3/4	x	59	x	29-1/2	29 - 42 3/4	1049.00
OP529	Black Oak	Silver	45-1/4	x	47-1/4	x	29-1/2	29 1/2 - 45 1/4	1019.00
OP530	Black Oak	Black	45-1/4	x	47-1/4	x	29-1/2	29 1/2 - 45 1/4	1039.00
OP531	Black Oak	Silver	45-1/4	x	59	x	29-1/2	29 1/2 - 45 1/4	1079.00
OP532	Black Oak	Black	45-1/4	x	59	x	29-1/2	29 1/2 - 45 1/4	1079.00

## PRECISION DRAFTING TABLES

- Durable drafting table features a heavy gauge steel base and a 4 post design with stabilizing bars on the bottom for maximum stability.
- Table includes a 12 1/2" W x 29 3/4" D tool drawer with lock and a 38 1/8" W x 28 3/4" D reference drawer under the board
- Boards are available in 60" or 72" sizes and have a non-glare green surface. Angle of board is easily adjustable for a comfortable working position on any project
- Grey enamel finish on base.



Shown with base which is sold separately

**SAFCO**

Model No.	Description	Dimensions				Wt. lbs.	Price /Each	
		W"	x	D"	x			H"
OA914	Small Board	60	x	37 1/2	x	1	77	499.00
OA909	Large Board	72	x	37 1/2	x	1	95	664.00
OA912	4 Post Base	56 3/8	x	30 1/2	x	35 1/2	99	1022.00

## FOLI™ HEIGHT ADJUSTABLE TABLES

- Electric height adjustment allows for easy movement from sitting to standing and back throughout the day
- Single motor hex rod drive system
- Shadow power draw of 0.5 watts
- All table frames are easy to assemble with few parts
- Height Range: 27.69" to 46.2"
- Capacity: 220 lbs.
- Base Finish: Silver Powder Coat



**global**

Model No.	Colour	Overall Dimensions						Price /Each
		H"	x	W"	x	D"		
OP284	Brown	46-1/5	x	60	x	30	1160.00	

## IONIC DESK TABLES

- Freestanding rectangular desk with 2 legs and stability panel
- Made of thermally fused laminate surfaces with 3mm PVC matching edge
- 2" square posts with levelers
- Designed for quick and easy assembly
- Tested to meet ANSI & BIFMA desking standards
- Overall Height: 29"
- Overall Width: 72"
- Overall Depth: 30"

OP327



**global**

Winter Cherry

Model No.	Colour	Overall Dimensions					Price /Each
		H"	x	W"	x	D"	
OP327	Dark Espresso	29	x	72	x	30	381.00
OP328	Winter Cherry	29	x	72	x	30	381.00
OP329	Dark Espresso	29	x	60	x	30	359.00
OP330	Winter Cherry	29	x	60	x	30	359.00

Can't find what you're looking for?  
Call us today!



## ACTIVERGO™ MONITOR ARMS

- Cost-effective and ergonomic alternative for monitor support
- Extend, tilt and swivel your monitor up to 90° left and right for easy viewing
- Reach: 16.75"
- Tilt motion makes it easy to reduce glare
- Clamp and grommet mount are included
- Features cable management clips
- Fits most 13" to 27" monitors
- Frame: Steel and aluminum structure
- Finish: Silver
- VESA standard mounts for monitors (75 and 100 mm)
- Weight Capacity: 17.6 lbs. (8 kg.)
- Warranty: 5 year



**CA HORIZON**

Model No.	No. of Screen	Price /Each
OP802	1	116.00
OP803	2	169.00

## ACTIVERGO™ MONITOR ARMS

- Ergonomic alternative for monitor support and helps free up space on your workstation
- Highly adjustable arm moves up, down, forwards, and backwards
- Monitor can rotate and swivel 180° and tilt up to 90°
- Detachable VESA plate for easy installation of monitor
- Features cable management system for clean look
- Clamp and grommet mount are included
- Weight Capacity Per Arm: 19.8 lbs. (9 kg.)
- Material: Die cast aluminum
- Warranty: 5 year



**CA HORIZON**

Model No.	No. of Screen	Price /Each
OP804	1	141.00
OP805	2	241.00

## ACTIVERGO™ MONITOR ARMS

- Cost-effective and ergonomic alternative for monitor support
- Extend, tilt and swivel your monitor up to 90° left and right for easy viewing
- Ball-joint structure allows to find the perfect viewing angle
- Clamp and grommet mount are included
- Features cable management clips
- Fits most 13" to 27" monitors
- VESA standard mounts for monitors (75 and 100 mm)
- Weight Capacity per Arm: 17.6 lbs. (8 kg.)
- Reach: 14.5"
- Frame: Steel
- Finish: Powder Coated
- Colour: Black
- Warranty: 5 year



**CA HORIZON**

Model No.	No. of Screen	Price /Each
OP968	1	79.40
OP969	2	119.00

## MONITOR & KEYBOARD STANDS

- Allows the user to raise monitor and keyboard for use as a standing workstation
- Promotes better posture, optimal viewing comfort and helps alleviate eye strain
- Easily adjustable
- Cables concealed within the adjustable arm
- Compatible with most desks and work surfaces
- Dimensions: 26" W x 28" D x 42-1/2" H
- Weight Capacity: 11 lbs.

Model No. OP664  
Price/Each \$377.00



**SAFCOACTIVE**

## IPAD® HOLDERS

- Ideal for use in education, health-care, corporate, retail and point of sale environments
- Compatible with iPad® models 2, 3, 4 and iPad® Air
- Lock and key secured case for tablet
- Provides home button accessibility
- Interior cable management
- 90° rotation and 75° tilt adjustable
- **OP808:** Steel base includes mounting holes for bolts for fixed application (floor bolts not included)
- **OP809:** Base Dimension: 300 mm x 400 mm



**CA HORIZON**

Model No.	Description	Height"	Price /Each
OP808	Anti-theft and floor mounted iPad® stand	49.25	165.00
OP809	Portable and free standing iPad® stand	49.5	200.00

## IPAD® HOLDERS

- Ideal for use in education, health-care, corporate, retail and point of sale environments
- Compatible with iPad® models 2, 3, 4 and iPad® Air
- Lock and key secured case for tablet
- Provides home button accessibility
- Interior cable management
- 90° rotation and 75° tilt adjustable
- **OP810:** Steel base includes mounting holes for bolts for fixed application (floor bolts not included)
- **OP811:** Base Dimension: 200 mm x 300 mm



**CA HORIZON**

Model No.	Description	Height"	Price /Each
OP810	Anti-theft and floor mounted iPad® stand	17.5	88.30
OP811	Portable and free standing iPad® stand	17.75	106.00

## MONITOR ARMS

- 13" of usable height adjustment
- Includes cable manager
- 360 degree swivel
- Material: Die cast aluminum and steel
- Reach: 26"
- Colour: Silver



### SINGLE SCREEN

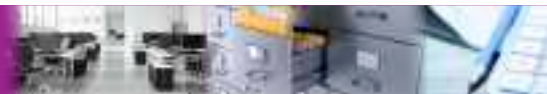
- Clamp and grommet mounting options
- Dimensions: 29.44" W x 8.88" D x 4.75" H

### DOUBLE SCREEN

- Quick and easy clamp installation
- Dimensions: 27.5" W x 19.75" D x 5" H



Model No.	No. of Screens	Weight Capacity lbs.	Price /Each
OQ012	1	14	189.00
OQ013	2	10	260.00



## DATA PROTECTION MEDIA SAFES

- Protects valuable records from vandalism, fire, dust and magnetism
- Paper records will withstand temperatures up to 177°C (350°F)
- Computer media records will withstand temperatures up to 52°C (125°F) and humidity up to 80%
- Rating: UL Class 350 -1 hour for safe, and data/media insert was furnace tested by manufacturer to 125°F (52°C) for 1 hour
- Pull out media drawers and stationary shelves accessories are also available
- Model **OE770** must be inserted into a U.L. Class 350, 1-hour filing cabinet
- Colour: Beige

F.O.B. Victoriaville, Quebec.

**GARDEX**



Model No.	Outside Dimensions				Wt. lbs.	Price /Each
	H"	x	W"	x D"		
<b>OE769</b>	29	x	21 1/2	x 21 1/2	315	<b>1780.00</b>
<b>OE768</b>	39	x	26 1/2	x 26 1/2	567	<b>2600.00</b>
<b>OE770</b>	9 5/8	x	15	x 21 1/4	40	<b>570.00</b>

## FIRE RESISTANT SAFE

- Manufacturer certified fire and burglary safe
- 60 minutes fire resistive
- Body and door are constructed of 2-1/2" thick bank level alloy
- Includes two 3/4" anchor holes
- Mechanism with 1" massive stainless steel bolts and 2 automatic relocking systems
- Lock protected by a 3/8" thick hard plate
- High quality finish with anti-rust treatment
- Colour: Grey

F.O.B. Victoriaville, Quebec.

**GARDEX**



Model No.	Outside Dim.				Cap Cu. Ft.	Number of Shelves	Weight lbs.	Overall Depth"	Price /Each
	D"	x	W"	x H"					
<b>OP956</b>	19-3/4	x	17	x 17	1	1	385	21-1/2	<b>1564.00</b>
<b>OP957</b>	24-1/4	x	19	x 24	2.54	1	640	26	<b>1733.00</b>
<b>OP958</b>	24-1/4	x	23	x 27	3.78	2	800	26	<b>1937.00</b>

## GRAND PRIX STORAGE SAFES

### STANDARD SAFES

UL® Class 350 1-hour fire and impact rating. Keep documents intact for one full hour despite exterior temperatures as high as 927°C (1700°F).

#### Features include:

- Heavy gauge satin coat steel with anti-rust treatment
- Insulated with moisture pockets between the walls
- Heavy-duty hinges
- 6" continuous fixed locking bar
- Includes mechanical combination lock and combination change key
- Adjustable shelves
- Heavy-duty caster base

F.O.B. Victoriaville, Quebec.



**GARDEX**

### LEDGER SAFE

Manufacturer-certified for 2 hours in a fire. Full size ledger safe ensures document security despite ambient temperatures reaching 1000°C (1850°F).

#### Features include:

- Three heavy-duty hinges
- Three adjustable shelves
- Includes mechanical combination lock and combination change key
- Caster base

F.O.B. Victoriaville, Quebec.



Model No.		Outside Dimensions					Inside Dimensions					Cap.		Wt.	Price
Black	Beige	H"	x	W"	x	D"	H"	x	W"	x	D"	Cu. Ft.	Shelves	lbs.	/Each
STANDARD SAFES															
OC750	OA690	24	x	18 1/2	x	18 1/2	17 1/2	x	15 1/2	x	12 1/2	2.2	1	168	1390.00
OC751	OA691	29	x	21 1/2	x	21 1/2	22 3/8	x	18 1/2	x	15 3/8	3.92	1	252	1560.00
OC752	OA692	39	x	26 1/2	x	26 1/2	32 1/4	x	23 1/2	x	20 3/8	9.36	3	480	1790.00
OC753	OA686	50 1/2	x	26 1/2	x	26 1/2	42 1/4	x	23 1/2	x	20 3/8	12.29	3	560	2190.00
LEDGER SAFES															
OC749	OC736	60	x	26 1/2	x	26 1/2	50	x	20	x	20	11.57	3	880	2970.00

## FIRE RESISTANT FILING CABINETS

All Gardex filing cabinets have UL® Class 350 1-hour fire rating. Cabinets maintain interior temperatures below 177°C (350°F) in ambient temperatures reaching 927°C (1700°F) for one hour. The char point of paper is only 230°C (420°F).

Valuable documents, mailing lists and critical records are kept safe from fire. Each drawer is independently insulated to protect documents even when another drawer is left open. Key operated plunger lock secures all drawers.

F.O.B. Victoriaville, Quebec.



Lateral



**GARDEX**



Vertical

Model No.		Outside Dimensions				Inside Dimensions				Wt. lbs.	Price /Each	
Black	Beige	H"	x	W"	x D"	H"	x	W"	x D"			
VERTICAL FILING CABINET - ACCOMODATES LEGAL WIDTH FILES												
OC737	OC740	54	x	19 3/4	x 31	9 1/2	x	15	x 26	4	670	2850.00
OC738	OC741	41	x	19 3/4	x 31	9 1/2	x	15	x 26	3	520	2600.00
OC739	OC742	28	x	19 3/4	x 31	9 1/2	x	15	x 26	2	386	1890.00
LATERAL FILING CABINET - ACCOMODATES LEGAL OR LETTER WIDTH FILES												
OC743	OC746	55	x	38 3/4	x 23 1/2	9 1/2	x	32 1/2	x 15 1/2	4	960	4000.00
OC744	OC747	42	x	38 3/4	x 23 1/2	9 1/2	x	32 1/2	x 15 1/2	3	740	3500.00
OC745	OC748	29	x	38 3/4	x 23 1/2	9 1/2	x	32 1/2	x 15 1/2	2	538	3000.00



## ONYX™ FILE CART

- Mobile file cart
- Material: Mesh
- Four 1-1/2" swivel wheels with two locking brakes
- **OP700:** Letter-size file cube
- **OP701:** Two letter-size file cubes, top shelf stores additional supplies
- **OK218:** Letter-size hanging file cube, two storage drawers, top shelf stores additional supplies
- **OP702:** Four storage drawers, top shelf stores additional supplies
- **OP703:** Two storage drawers, open hanging files
- Assembly required



Model No.	Dimensions				Price /Each
	W"	x	D"	x	H"
OP700	13-1/2	x	16-3/4	x	13
OP701	15-3/4	x	17	x	27
OK218	15-3/4	x	17	x	27
OP702	15-3/4	x	17	x	27
OP703	15-3/4	x	17	x	27



## VERTICAL FILE CABINET

- High side walls accommodate hanging files and eliminate ball bearing suspension for easy opening and closing
- Drawer front features a recessed angled full pull
- Lock included
- Meets or exceeds ANSI/BIFMA



Black	Model No.	Grey	Beige	No. of Drawers	Dimensions				Price /Each
					W"	x	D"	x	H"
LETTER WIDTH									
OP912	OP916	OP920		2	15-1/7	x	25	x	29
OP914	OP918	OP922		4	15-1/7	x	25	x	52
LEGAL WIDTH									
OP913	OP917	OP921		2	18-1/7	x	25	x	29
OP915	OP919	OP923		4	18-1/7	x	25	x	52

## LATERAL CABINETS

- Interlock system allows for only one drawer to open at a time
- Lock bars on both sides of the cabinet for increased security
- Comes standard with counterweight
- 12" high drawers
- Includes four leveling glides
- Meets or exceeds ANSI/BIFMA



Black	Model No.	Grey	Beige	No. of Drawers	Dimensions				Price /Each
					W"	x	D"	x	H"
OP324	OP325	OP326		2	36	x	19-1/4	x	27-31/100
OP905	OP907	OP910		3	36	x	19-1/4	x	39-3/5
OP321	OP322	OP323		4	36	x	19-1/4	x	52-6/100
OP906	OP908	OP911		5	36	x	19-1/4	x	66-5/9

## MULTI-STOR CABINETS

- Cabinet features two fixed and one adjustable shelf
- Cabinet doors open at least 170° for easy access
- Each shelf has a total capacity of 110 lbs. or 75 lbs. if not evenly spread out
- Lateral file drawers includes side to side hanging file bars
- Two separate locking system in each cabinet
- Four adjustable levelling glides
- Dimensions: 36" W x 18" D x 65-1/4" H



OTE784

Model No.	Colour	Price /Each
OTE783	Black	1077.00
OTE784	Grey	1077.00
OTE785	Beige	1077.00



# FILING & STORAGE

## ENVIRASTOR® STOR/DRAWER®

- Economical & environmental:  
100% recycled material and a minimum of 67% post-consumer waste
- Sturdy internal liner in the outer shell provides long lasting strength
- Attractive green graphics are printed on the kraft background with water-based ink
- Recommended stacking 2-high on metal shelving



Model No.	Record Size	Inside Drawer Dim.					Price /Each
		W"	x	D"	x	H"	
OA077	Cheque	9	x	24	x	4 1/2	36.60
OA086	Letter	12 1/4	x	24	x	10 1/2	39.60
OA078	Legal	15 1/4	x	24	x	10 1/2	43.80

## STOREX STORAGE FILE DRAWER SYSTEMS

- Durable plastic construction with plastic rollers on drawers for smooth operation
- Convenient built-in label holder
- Accommodates file folders or hanging files
- Stackable up to 10 units high with secure interlocking system
- Ideal for dust and mildew control in schools, hospitals and other public buildings



Model No.	Record Size	Inside Drawer Dim.					Price /Each
		W"	x	D"	x	H"	
OE785	Letter	15	x	24 1/4	x	11 1/2	65.20
OE786	Letter	15	x	24 1/4	x	11 1/2	64.70
OE812	Legal	17 7/8	x	24 3/8	x	11 1/4	77.60

## STORAGE BOXES

- Fits letter or legal size
- Dimensions: 12" W x 15" D x 10" H

### Model No. OA087

- Wood grain finish
- Stackable up to 850 lbs.
- 59% post consuming

Price/Each \$15.50



### Model No. OA075

- 100% recycled material
- Stackable up to 350 lbs.
- 67% post consuming
- Comes with attached lid

Price/Each \$10.30



## FILE FOLDERS

Other colours available



Priced per box of 100



Description	Model No. Letter	Price /Box	Model No. Legal	Price /Box
<b>1/2 CUT REVERSIBLE</b>				
9 1/2 pt Manila	OB762	28.20	OB761	35.50
9 1/2 pt Ivory	OB763	24.90	OB764	33.90
10 1/2 pt Ivory	OB765	30.00	OB766	36.30
<b>STRAIGHT CUT</b>				
9 1/2 pt Manila	OTD040	31.10	OTD243	38.50
10 1/2 pt Ivory	OTD056	28.70	OTD258	35.90

## REVERSAFLEX® HANGING FILE FOLDER

- Poly-laminate reinforced for 10 times the durability
- Includes Infopockets™, interior pockets for filing smaller items such as floppy disks or photos
- Reinforced upper and inner fold



Model No.			Description	Dimensions L" x H"	Qty /Pkg.	Price /Each
Yellow	Blue	Green				
OB714	OB715	OB711	Letter Size	11 x 8-1/2	25	55.60
OB722	OTD153	OB719	Legal Size	14 x 8-1/2	25	64.60

## ECONO/STOR® BOXES

- Perfect choice for economical storage of semi-active or dead records
- Features smooth rolled edges provides a clean finish and avoids paper cuts
- The versatile OA081 can be adapted to your needs, holding up to one cubic foot of legal or letter size files



Model No.	Record Size	Inside Drawer Dim.					Price /Each
		W"	x	D"	x	H"	
OA082	Letter	12	x	24	x	10	16.20
OA079	Legal	15	x	24	x	10	19.70
OA081	Letter or Legal	12	x	15	x	10	8.64

## STORAGE FILES

- Stack up to 5 boxes high
- Hanging folder rails included
- Recycled material: 60%
- Post-consuming: 50%

### Model No. OL942

- Letter size
- 12 1/2" W x 23 1/4" D x 10 3/8" H

Price/Each \$41.00

### Model No. OL943

- Legal size
- 15 1/2" W x 23 1/4" D x 10 3/8" H

Price/Each \$48.40



## STEEL PLAN FILES

- Welded steel construction, wrap around corners and sturdy inner frame
- Front supports add stacking strength
- Files are modular so they can be used individually or in a space saving stack
- Stack up to five high on a closed base
- Reinforced top offers additional work and storage space
- 5 and 10 drawer files can be mixed or matched for customized high volume storage
- Choice of 6" closed base or 20" high base
- Baked enamel finish in Tropic Sand or Grey
- All flat files have museum/archival quality point finish



**OB146**  
• Two units stacked

### OPTIONAL BASES FOR STEEL PLAN FILES

#### Closed Bases

- Holds up to five files
- Raises files 6" off ground
- Recessed 2 3/4"



#### High Bases

- Raises files 20" off the floor and raises top of file to a 36" level to provide work space
- Enclosed back and sides and open front provide extra bookshelf space



**OB169**

**OB151**



Base sold separately

#### 5 DRAWER

- Versatile file stores up to 500 sheets per unit active filing, 750 sheets of semi-active, or 1000 sheets of inactive material
- Five large capacity 2" deep drawers in three cabinet sizes

#### 10 DRAWER

- Ideal for high traffic project storage areas
- Ten 1" deep drawers allow the easiest retrieval of materials from the file and minimize material damage

Model No.		Description	Inside Drawer					Cabinet					Wt. lbs.	Price /Each
Grey	Tropic Sand		W"	x	D"	x	H"	W"	x	D"	x	H"		
OB146	OA651	5 Drawer	37	x	26	x	2 1/8	40 3/8	x	29 3/8	x	16 1/2	177	2049.00
OB148	OA186	5 Drawer	43	x	32	x	2 1/8	46 3/8	x	35 3/8	x	16 1/2	222	2369.00
OB151	OA220	5 Drawer	50	x	38	x	2 1/8	53 3/8	x	41 3/8	x	16 1/2	267	2805.00
-	OA189	10 Drawer	43	x	32	x	1 1/8	46 3/8	x	35 3/8	x	16 1/2	307	4203.00
OB161	OB162	High Base for OB146, and OA651 Cabinets	-		-		-	-		-		37	787.00	
OB165	OB166	High Base for OB148, OA186 and 10 Drawer cabinets	-		-		-	-		-		42	841.00	
OB169	OB170	High base for OB151 and OA220 Cabinets	-		-		-	-		-		47	877.00	
OB173	OA653	Closed Base for OB146 and OA651 Cabinets	-		-		-	-		-		22	361.00	
OB176	OA204	Closed Base for OB148, OA186 and 10 Drawer Cabinets	-		-		-	-		-		26	387.00	
OB179	OA187	Closed Base for OB151 and OA220 Cabinets	-		-		-	-		-		30	485.00	

Optional locks: OG362 - Lock Kit for 5-Drawer Cabinet Price/Each \$135.00 OG363 - 10 Drawer Files Price/Each \$135.00

## DATA ORGANIZERS

- Horizontal literature rack
- All racks easily bolt together with fasteners provided
- Steel modular, horizontal racks that can be grouped for floor or table mounted storage
- Capacity for literature or directories up to three inches thick
- Tan enamel finish
- Includes: Mounting clips

Can be stacked for personalized use!



**DURHAM MFG**  
Est. 1922

Specifications	Model OA157	Model OA168	Model OC554
Height "	10-3/4	14-1/4	17-3/4
Width "	33-3/4	33-3/4	33-3/4
Depth "	11-5/8	11-5/8	11-5/8
Opening Width "	11	11	11
Opening Depth "	11-1/2	11-1/2	11-1/2
Opening Height "	3	3	3
No. of Openings	9	12	15
Paper Width "	8-1/2	8-1/2	8-1/2
Price/Each	\$199.00	\$239.00	\$309.00

## VALUE SORTERS®

- Economical yet sturdy steel/corrugated construction
- All steel exterior and support shelves
- Wide shelf fronts have label holders for easy identification of contents (labels included)
- Quick-lock design for easy assembly without tools
- Letter Size Compartments: 9 3/4" W x 12 1/2" D x 2 1/2" H



**SAFCO**

Model No.		No. of Compartments	Overall Dimensions				Wt. lbs.	Price /Each	
Black	Grey		W"	x	D"	x			H"
OA135	OA132	24	32 1/4	x	13 1/2	x	25 3/4	26	241.00
OA129	OA126	36	32 1/4	x	13 1/2	x	38	36	276.00
OA139	OA141	72	32 1/4	x	13 1/2	x	75	61	475.00

# FILING & STORAGE

## VALUE MATE® STEEL BOOKCASES

- Economical, durable steel bookcases with attractive radius corners
- Strong steel exterior & shelves with solid fibreboard back
- 12" deep shelves accommodate oversized materials
- Shelves adjust in 1" height increments during assembly
- Quick-lock design for easy assembly
- All book-cases are 31 3/4" wide and 13 1/2" deep

OE174



Model No.	Mfg. No.	Colour	No. of Shelves	Height"	Price /Each
OE174	7170BL	Black	2	28	187.00
OE175	7170GR	Grey	2	28	187.00
OE179	7171BL	Black	3	41	219.00
OE180	7171GR	Grey	3	41	219.00
OE184	7172BL	Black	4	54	282.00
OE185	7172GR	Grey	4	54	282.00
OE189	7173BL	Black	5	67	343.00
OE190	7173GR	Grey	5	67	343.00
OE194	7174BL	Black	6	80	391.00
OE195	7174GR	Grey	6	80	391.00

## IONIC L-SHAPED DESK SUITES

- L-shaped suite that includes a rolling pedestal and a desk panel
- Made of thermally fused laminate surfaces with 3mm PVC matching edge
- Material: Laminate

OP336



Model No.	Overall Dimensions W" x D" x H"	Colour	Price /Each
OP335	66 x 66 x 29	Dark Brown	1049.00
OP336	66 x 66 x 29	Brown	1049.00

## IONIC BOOKCASES

- Designed for quick and easy assembly
- Made of thermally fused laminate surfaces with 3 mm PVC matching edge
- Matching back panel
- Four adjustable floor leveling glides
- Tested to meet ANSI & BIFMA desking standard



OP334

OP331



Model No.	Overall Dimensions W" x D" x H"	No. of Shelves	Colour	Price /Each
OP331	30 x 12 x 65	5	Dark Brown	295.00
OP332	30 x 12 x 65	5	Brown	295.00
OP333	30 x 12 x 48	4	Dark Brown	230.00
OP334	30 x 12 x 48	4	Brown	230.00

## IONIC SINGLE PEDESTAL DESKS

- Rectangular desk with hanging box file pedestal
- Made of thermally fused laminate surfaces with 3mm PVC matching edge
- No. of Pedestals: 1
- Pedestal Location: Left
- No. of Drawers: 2

OP337



Model No.	Overall Dimensions W" x D" x H"	Colour	Price /Each
OP337	60 x 30 x 29	Dark Brown	535.00
OP338	60 x 30 x 29	Brown	541.00

## WOOD BOOKCASES

- Gables and shelves are 11/16" thick
- Fully assembled
- Colour: Black

OK060



Model No.	Shelves	Dimensions W" x D" x H"	Price /Each
OK060	4 (3 adjustable, 1 fixed)	36 x 12 x 48	190.00
OK063	5 (4 adjustable, 1 fixed)	36 x 12 x 72	251.00

## DESKSIDE WASTEBASKETS

- Makes for easy sorting when placed next to desk recycling container
- Compact size fits under most desks
- Perfect for daily office use
- Made of durable, lightweight polyethylene that will not rust, chip or dent
- Material: Polyethylene
- Type: Desk-side

JK675



JK674



Model No.	Overall Dimensions W" x D" x H"	Colour	Capacity US Qt.	Weight Lbs.	Price /Each
JK672	48 x 30 x 48	Black	14	1.21	7.45
JK673	48 x 30 x 48	Blue	14	1.21	7.45
JK674	60 x 30 x 48	Black	28	1.69	10.15
JK675	60 x 30 x 48	Blue	28	1.69	10.15

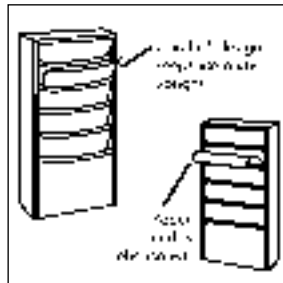


## LITERATURE STORAGE RACKS

- Construction is of sturdy heavy gauge steel
- Provide a convenient and compact way to store literature
- Most models accommodate 150 standard 8 1/2" x 11" sheets, while others are wider to hold magazines and special forms



**DURHAM MFG**  
Est. 1922



OA163



OA165



OA148



OA128

OA158

OA179

Grey	Model No.		Overall						Openings					Paper Width"	No. of Pockets	Wt. lbs.	Price /Each
	Tan	Black	W"	x	D"	x	H"	W"	x	D"	x	H"					
OA152	OA130	OC536	9 3/4	x	4 1/8	x	65 1/2	8 5/8	x	3/4	x	8 1/2	8 1/2	23	32	239.00	
OA166	OA156	OA607	13 1/8	x	4 1/8	x	58 1/2	12 1/8	x	1	x	8 3/4	12	20	38	269.00	
OA161	OA155	OC537	9 3/4	x	4 1/8	x	36	8 5/8	x	3/4	x	8 1/2	8 1/2	11	18	139.00	
OA148	OA162	OA125	13 1/4	x	4 1/8	x	36	12 1/8	x	1	x	8 3/4	12	11	24	169.00	
OA169	OA165	OC539	9 3/4	x	4 1/8	x	21	8 5/8	x	3/4	x	8 1/2	8 1/2	5	9	99.60	
OA163	OA144	OA609	13 1/8	x	2	x	26 1/4	12 1/8	x	5/16	x	5 5/8	12	10	13	109.00	
ROTATING LITERATURE RACKS																	
OA149	OA179	OC552	14 1/8	x	14 1/8	x	66	8 5/8	x	3/4	x	8 1/2	8 1/2	92	136	1139.00	
OA134	OA158	OC548	14 1/8	x	14 1/8	x	48 1/2	8 5/8	x	3/4	x	8 1/2	8 1/2	44	92	839.00	
OA145	OA128	OC546	14 1/8	x	14 1/8	x	21 1/4	8 5/8	x	3/4	x	8 1/2	8 1/2	20	47	569.00	

## WIRE MESH OFFICE MAIL CART

- Ideal for carrying hanging folders, packages and office supplies
- Comes with three wire dividers and two removable baskets
- Shipped knocked down
- Colour: Chrome
- Cart Material: Chrome Plated
- No. of Shelves: 2
- No. of Baskets: 2



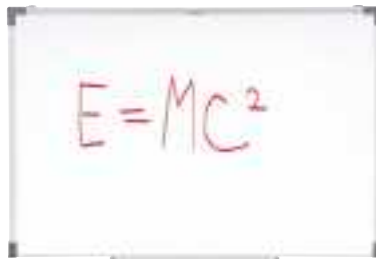
**KLETON**

Model No	Overall Dimensions					Capacity lbs.	Price /Each
	W"	x	D"	x	H"		
M0843	42	x	23	x	38	250	383.00

# PRESENTATION BOARDS

## WHITE BOARDS

- White writing surface provides clean, colourful display
- Effortless erasing, wipes clean with cloth or felt brush
- Aluminum frame
- Plastic corners for board and wall protection



### NON-MAGNETIC

Model No.	Dimensions"	Wt. lbs.	Price /Each
ON530	18 x 24	3.25	23.70
ON531	24 x 36	6	39.20
ON532	36 x 48	10.5	68.85
ON533	48 x 72	18	136.00
ON534	48 x 96	30	168.00

### MAGNETIC

Model No.	Dimensions"	Wt. lbs.	Price /Each
ON535	24 x 36	6	93.10
ON536	36 x 48	10.5	150.00
ON537	48 x 72	18	399.00

## IMPROMPTU® MOBILE WHITE BOARDS

- Steel frame construction
- 2 1/2" dia. casters (two lock)
- Accessory hooks for easel pads
- Includes magnetic accessory tray for dry erase markers and eraser
- 42" W x 21 1/2" D x 72" H
- Style: Magnetic

Model No. ON739  
Price/Each \$617.00



## PORCELAIN WHITEBOARD

- White magnetic writing surface provides a clean, colourful display
- Porcelain surface is smooth and resistant to staining
- Effortless erasing, wipes clean with cloth or felt brush
- Galvanized steel backing for added durability
- Plastic corners for board and wall protection
- Mounting hardware included



OP534



Model No.	Dimensions"	Price /Each
OP534	18 x 24	56.40
OP536	36 x 48	158.00

## PANELMATE® ORGANIZER - DRY-ERASE MARKERBOARD

- 11" x 14" melamine markerboard with tray; mounting height is adjustable up to 18" from top of panel
- Fits panels up to 3-1/4" thick
- Welded steel construction
- Size: 13 1/2" W X 1 3/4" D X 16-5/8" H

Model No. OE162  
Price/Each \$59.40



## EURO™ ENCLOSED MAGNETIC WHITE BOARD

- Features a hinged glass swing door for easy access while protecting displays
- Magnetic white board surface doubles as a magnetic bulletin board
- For indoor and outdoor use
- Glass door has a barrel lock and two keys
- Includes invisible brackets for easy wall mounting
- Style: Magnetic/Dry-Erase
- Colour: White
- Frame Finish: Silver



Model No.	Dimensions"	Can hold	Price /Each
OP849	30 x 27	27" x 25" signage or up to 6 letter size sheets	313.00

## INFINITY™ GLASS MAGNETIC MOBILE EASEL

- Portable easel features a glass dry-erase board surface
- Glass will not stain or ghost
- Features flip chart holders, 5 locking caster wheels, and one accessory tray
- Adjustable Overall Height: 67" to 77"
- Triple Functionality: White board, magnetic bulletin board and flipchart holder
- Colour: White
- Base Material: Metal

OP852



Model No.	Description	Board Dimensions W" x H"	Price /Each
OP852	-	24 x 36	667.00
OP853	Reversible	48 x 36	857.00

## GLASS DRY-ERASE BOARD

- Glass dry-erase board provides a smooth writing surface
- Magnetic backing allows for hanging of documents
- Glass board will not stain, ghost, scratch or dent
- Frameless design
- Can be hung vertically or horizontally
- Includes:
  - (1) Marker tray
  - (1) Dry-erase marker,
  - (2) Magnets
  - (1) Set of mounting hardware and instructions
- Made of tempered glass

OQ909



Model No.	Dimensions Height" x Width"	Style	Colour	Price /Each
OQ909	24 x 36	Magnetic	White	105.00
OQ910	36 x 48	Magnetic	White	225.00
OQ911	48 x 71	Magnetic	White	489.00
OQ912	48 x 95	Magnetic	White	530.00

# PRESENTATION BOARDS

## COMBINATION BOARD

- Dual-purpose cork/white board provides versatility in getting your message across
- Porcelain whiteboard for a smooth and clear writing surface
- Double-sided cork for added durability
- Ideal for office or warehouse environments
- Plastic-molded corners protect the boards and wall from damage
- Sturdy aluminum frame
- Dimensions: 36" W x 24" H

Model No. OP542

Price/Each \$39.55



## EURO™ ENCLOSED BULLETIN BOARD

- Features a hinged glass swing door for easy access while protecting displays
- Glass door has a barrel lock and two keys
- Includes invisible brackets for easy wall mounting
- For indoor use
- Bulletin Surface Type: Cork
- Frame Finish: Silver Aluminum
- Orientation: Horizontal
- Mounting Hardware Type: Pass-through or Z-bracket



Model No.	Dimensions"	Can hold	No. of doors	Price /Each
OP847	30 x 27	27" x 25" signage or up to 6 letter size sheets	-	278.00
OP848	38 x 39	36" x 27" signage or up to 12 letter size sheets	2	431.00

## WHITE BOARD CLEANING WIPES

- Remove ghosting and stubborn marker ink from most dry erase surfaces
- Disposable
- Type: Wipes
- Wipe Size: 5-1/2" X 10"
- Wipes Per Pack: 50

Model No. OTK167

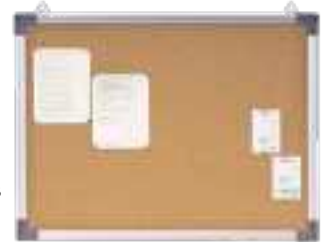
Price/Each \$11.50



## CORK BOARDS

- Ideal for office or warehouse environments
- Sturdy aluminum frame
- Plastic-molded corners protect the board and wall from damage
- Double-sided cork for added durability

ON593



Model No.	Dimensions"	Wt. lbs.	Price /Each
ON593	18 x 24	3.5	26.15
ON594	24 x 36	6	40.75
ON595	36 x 48	10.5	66.90
ON596	48 x 72	18	175.00
ON597	48 x 96	30	205.00

## CORK BOARD ACCESSORIES

### PUSH PINS

- Plastic head, assorted colours
- 100/pkg.
- Priced per package

Model No. OJ472

Price/Each \$3.14



## MAX CLEAN™ DRY ERASE BOARD ERASER

- 3-in-1 cleaning for glass surface marker boards, chalkboards and whiteboards
- Works on all dry erase surfaces
- Optimized for use on glass boards
- Store in the included magnetic caddy, or place directly on a magnetic surface
- Dimensions: 6" L x 2-3/8" W x 1-1/2" H
- Colour: Silver

Model No. OQ813

Price/Each \$26.50



## ENDURAGLIDE® DRY-ERASE MARKERS

- Designed for dry-erase boards
- Low odour marker
- Features a see-through barrel ink gauge
- Anti-roll cap
- Tip Type: Chisel
- Colour Assortment: Black, blue, red, and green
- Markers per Pack: 4

Model No. OP856

Price/Each \$10.80



## PREMIUM GLASS DRY-ERASE MARKERS

- Designed for glass surfaces
- Low odour marker
- Features an ink gauge to clearly see ink level
- Tip Type: Bullet



Model No.	Colour	Colour Assortment	Markers /Pack	Price /Each
OP854	Assorted	Black, blue, red, and green	4	13.90
OP855	Black	-	1	3.26

## DURA-INK® DRY ERASE INK MARKERS

- Ideal for white board marking in offices and factories
- Mark can be removed quickly and easily with dry rag, towel, or eraser
- No residue or ghosting after mark is removed on most non-porous surfaces



Model No.	Description	Price /Each
PE773	Red	2.32
PE774	Black	2.32
PE775	Blue	2.32
PE776	Green	2.32

## RARE EARTH MAGNETS

- Compatible with magnetic glass marker boards and whiteboards
- Extra strong and large magnets can hold up to 6 unstapled sheets
- Colour: Clear
- Quantity Per Pack: 6
- Strength: 8 lbs.
- Diameter: 3/4"
- Height: 3/4"

Model No. OP821

Price/Each \$18.40



## COVERED DIRECTORY BOARDS

- Locking glass door on hinges provides a professional appearance, deters unauthorized access to messages
- Felt grooved black surface
- 1/4" plexiglass in aluminum frame



Model No.	Dimensions H" x W"	Wt. lbs.	Price /Each
OA471	36 x 24	34	624.00



# KEY CABINETS

## DUPLI-KEY® TWO-TAGS CABINETS

- Sturdy, welded steel with piano-hinged door and key panels
- Heavy-duty, 20-gauge steel body and 18-gauge steel door
- Mount cabinet on wall (mounting screws included), or use on table or shelf
- Cabinet includes a disc-tumbler lock with two keys
- Includes: red octagon key tags (model **OG894**) and white oval key tags (model **OG895**) same amount as key capacity, cross reference key guide, key loan record sheet, key receipt slip, brass key receipt holders and key collection envelopes
- The double key system insures proper security and avoids key loss
- How it works: the master key is fastened to the red tag and filed permanently on a labelled hook; duplicate keys are fastened to white tags on the same hook; each key is indexed in three ways: by hook number, alphabetically by what the key opens and numerically
- When a key leaves the system, a receipt tag is filled out and hung with the master key and all loans are recorded in the key loan record sheet



OG893

OG888



Model No.	Dimensions				Key Capacity	Wt. lbs.	Price /Each
	W"	x	D"	x			
OG884	8	x	2 1/2	x	12 1/8	30	216.00
OG886	14	x	3 1/8	x	17 1/2	60	291.00
OG887	14	x	3 1/8	x	17 1/2	90	355.00
OG888	16 1/2	x	5	x	20 1/2	120	421.00
OG889	16 1/2	x	5	x	20 1/2	180	538.00
OG890	16 1/2	x	5	x	20 1/2	240	676.00
OG891	16 1/2	x	5	x	31 1/8	300	740.00
OG892	16 1/2	x	5	x	31 1/8	390	876.00
OG893	16 1/2	x	5	x	31 1/8	460	932.00

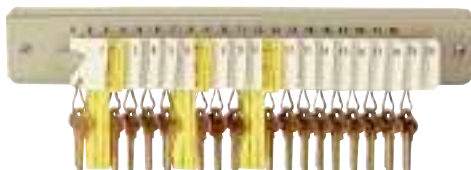
### EXTRA KEY TAGS & ACCESSORIES

Model No.	Description	Price /Each
OK126	Key Tag, Red Octagon, 20/Pack	13.00
OG895	Key Tag, White Oval, 20/Pack	12.90
OP901	Slotted Plastic Key Tag, White, 20/Pack	13.70
OP902	Slotted Plastic Key Tag, Assorted Colours, 20/Pack	16.60
OG896	Key Collection Envelopes, 100/Pack	26.40
OG898	Plastic Key Receipt Holders, 120/Pack	69.60
OG899	Key Loan Record Sheets, 24/Pack	27.50
OG897	Cross Reference Index Binder, 30 to 80 Keys	36.30
OG903	Cross Reference Index Binder, 90 to 240 Keys	43.00
OG904	Key Receipt Slips, 250/Pack	8.71

## 20-KEY RACKS

- Sturdy, lightweight, welded-steel key rack
- Mounts on walls and doors in offices or warehouses
- Dimensions: 13 3/4" W x 2 1/4" H
- Includes: Numbered key tags, "out key" control tags and mounting screws

Model No. **OG902**  
Price/Each \$24.50



## ALUMINUM KEY CABINET

- Hook style key tags coordinate with identification labels inside
- Pre-drilled holes for mounting
- Included: 2 Keys and Key tags
- Colour: Silver



FL810



Model No.	Mfg. No.	Height	Width	Depth	Key Tags	Price /Each
FL810	KMCS-24	12-2/5"	8-3/5"	2-1/5"	24	66.90
FL811	KMCS-48	18-3/5"	10-3/5"	2-1/5"	48	96.90
FL812	KMCS-72	18-3/5"	15-3/4"	2-1/5"	72	119.00

## DUPLI-KEY® IN DRAWER KEY TRAYS

- Compact and portable, fits easily into most desk drawers and safes
- Convert your office desk drawer into a key control system
- Constructed of molded plastic, making it light and durable
- Accommodates 56 keys - 8 panels with 7 hooks each
- Each hook includes two key tags, a self-locking tag for master keys and a standard snap hook key tag for duplicate keys
- Dimensions: 12" W x 9 7/8" D x 4 3/4" H
- Colour: Putty
- Weight: 6 lbs.

Model No. **OG900**  
Price/Each \$248.00



## FILE DRAWER KEY RACKS

- Ideal for secure out-of-the-way key control
- Sturdy, molded plastic, 40-key rack that comes complete with numbered key tags
- Clamps on back allows for easy attachment to rear of standard office file drawers and deep desk drawers
- Dimensions: 12" W x 1 3/4" D x 10" H
- Includes: Numbered key tags, "out key" control tags and key control chart

Model No. **OG901**  
Price/Each \$39.20



## SUPER48™ KEY-BAK® KEY CHAINS

- Exclusive quick-draw extension
- Choice of two cable types: Kevlar® or stainless steel, both 48"
- Corrosion-proof polycarbonate casing
- 8 to 10 oz. retraction force
- Large split ring to hold many keys
- Belt clip on back
- Model **ON541** has a leather belt loop
- Ideal for maintenance, janitorial, safety and security personnel



Model No.	Mfg. No.	Cable Type	Price /Each
VE525	S48	Stainless Steel	24.30
TLZ008	S48K	Kevlar®	21.80
ON541	S48-LEK	Kevlar®	25.40



## SELF RETRACTING ID BADGE AND KEY REEL

- Sidekick offers maximum security for keys and badges
- Vinyl ID badge strap and split ring for keys
- Carabiner Diameter: 1- 3/8" (3.5 cm)
- Key Capacity: 5
- ID Badge Capacity: 1
- Twist-free end fitting
- Retraction Force: 0 oz. - 4 oz.
- With carabiner



Model No.	Mfg. No.	Material	Cable Length"	Cable Type	Price /Each
OP293	OKBP-0A21	Zinc Alloy Metal	24	Kevlar® Cable	13.10

## SELF RETRACTING KEY CHAINS #487-HD

- 48" stainless steel cable
- Textured chrome front
- Stainless steel mounting bracket
- 8 to 10 oz. retraction force
- 1 1/8" diameter split ring
- Ideal for safety and security personnel



Model No.	Mfg. No.	Price /Each
ON544	0487-002	24.60

## SECURIT™ KEY-BAK® KEY CHAINS

- 48" Cord made with DuPont™ Kevlar® fibre
- Rugged carabineer makes securing the unit to almost anything easy
- Corrosion-proof polycarbonate casing
- Retraction Force: 8 oz. - 10 oz.



Model No.	Mfg. No.	Price /Each
TLZ010	4888	23.00

## THE ORIGINAL KEY-BAK®

- Stainless steel chain extends to 24"
- Pocket watch size
- Chrome texture finish
- 2 1/2 oz. weight
- With regular belt clip
- Retraction Force: 0 oz. - 4 oz.



Model No.	Mfg. No.	Price /Each
TLZ009	5	18.20

## ORIGINAL KEY-BAK® SELF-RETRACTING REELS #485-HDK

- 48" Cord made with DuPont™ Kevlar® fibre
- Chrome front
- 8 to 10 oz. retraction force
- 1 1/8" split ring
- Belt clip
- Ideal for maintenance, janitorial, safety and security personnel



Model No.	Mfg. No.	Price /Each
ON542	0485-821	21.20

## MID6 SERIES MID SIZE RETRACTORS #6

- 36" Cord made with DuPont™ Kevlar® fibre
- Tough polycarbonate case
- 6-oz. retraction force
- 360° rotating clip
- 1" nickel plated split ring
- Holds 10 keys
- Belt clip
- Ideal for maintenance, janitorial, safety and security personnel



Model No.	Mfg. No.	Price /Each
ON543	0006-001	14.60

## SELF RETRACTING ID BADGE & KEY REEL WITH WHISTLE

- Sidekick offers maximum security for keys and badges
- Vinyl ID badge strap and split ring for keys
- Carabiner Diameter: 1 3/8" (3.5 cm)
- Key Capacity: 5
- ID Badge Capacity: 1
- FOX40® Classic Safety Whistle
- Three-chamber pea-less whistle (works wet or dry)
- Retraction Force: 0 oz. - 4 oz.
- With carabiner



Model No.	Mfg. No.	Material	Cable Length"	Cable Type	Price /Each
OP294	OKBP-0041	Zinc Alloy Metal	24	Kevlar® Cable	21.50

## RETRACTABLE MINI-BAK® ID BADGE HOLDERS

- 36" nylon cord
- Vinyl strap for identification cards (ID)
- Made of ABS plastic
- Tested in excess of 180 000 pulls
- 2 oz. retraction force
- Belt clip
- Ideal for maintenance and janitorial, safety and security personnel, identification and communication



Model No.	Mfg. No.	Price /Each
ON545	0057-005	7.09



## RETRACTABLE MINI-BAK® KEY RINGS

- 36" nylon cord
- Made of ABS plastic
- 3/4" split ring
- Tested in excess of 180 000 pulls
- 2-oz. retraction force
- Ideal for maintenance and janitorial, safety and security personnel, identification and communication



Model No.	Mfg. No.	Price /Each
ON546	0050-005	7.09

# LABEL MAKERS

## BROTHER® PT-H110 PORTABLE LABEL MAKER

- Lightweight and portable
- Easy-type QWERTY keyboard
- Easy-view graphical display for easy preview before printing
- 3 fonts, 14 frames and more than 250 symbols
- Useful cable labeling feature to easily organize your wires and cables
- Stores up to 15 labels for quick reprinting
- Prints 1 or 2 lines of text on labels up to 12 mm wide (approx. 1/2")
- Flexible - Works with 6 x "AAA" batteries (not included) or optional AC adapter
- Uses Brother "TZe" tapes in a variety of colors, sizes and types: standard, extra strength, acid free adhesive, cable and wire, fabric iron on and more
- Ideal for home and office applications
- Tape Sizes: 3.5 mm, 6 mm, 9 mm, 12 mm
- Tape Family: TZe • Tape Length: 26.2' (8 m)
- Unit Dimensions (W x D x H): 11 cm x 20.5 cm x 5.8 cm
- Includes: One 0.47" (12 mm) x 13.1' (4 m) black on white TZe starter tape

Model No. OP798  
Price/Each \$69.50



### REPLACEMENT BATTERIES

Model No.	Description	Price /Each
XB873	AAA, Alkaline-24/pkg	20.64

### TZE TAPE CARTRIDGES

Model No.	Description	Price /Each
OB650	9 mm (3/8") Black on White	24.10
ON443	12 mm (1/2") Black on White	26.40

See page 1621 for other available colours.

## BROTHER® PT-E110VP HANDHELD LABEL PRINTER

- Intuitive label application keys - Simple menus for common applications with smart technology
- 4 label sizes available—3.5mm, 6mm, 9mm and 12mm in a variety of colours
- Large LCD display with application icons
- Produces high-quality and extremely durable laminated labels that can withstand abrasion, fading, extreme temperatures, chemicals, moisture and other harsh conditions
- Type of Label Printer: HandHeld
- PC/Mac Compatibility: None
- Keyboard Type: Qwerty
- Power Source: Plug-In/Battery Operated
- Print Speed: 20mm per second
- Colour: Black

Model No. OQ754  
Price/Each \$94.30

brother  
at your side



### TZE TAPE CARTRIDGES

Model No.	Description	Price /Each
OB650	9 mm (3/8") Black on White	24.10
ON443	12 mm (1/2") Black on White	26.40
OB654	18 mm (3/4") Black on White	31.40

See page 1621 for other available colours.

## BROTHER® PT-D400AD LABEL MARKER

- Quickly create personalized labels
- Top-loading tape design allows for easy tape change
- Powered by 6 AA batteries (sold separately) or AC power adaptor (included)
- PC/Mac Compatibility: None
- Keyboard Type: Qwerty
- Display Type: LCD
- Tape Sizes: 3.5 mm, 6 mm, 9 mm, 12 mm, 18 mm
- Tape Technology: Thermal
- Tape Family: TZe • Tape Length: 26.2' (8 m)
- Unit Dimensions (W x D x H): 18.9 cm x 17.7 cm x 7.2 cm
- Includes: One 18 mm x 4 m black on white TZe starter tape and AC adapter

Model No. OP887  
Price/Each \$86.00



brother  
at your side

### TZE TAPE CARTRIDGES

Model No.	Description	Price /Each
OB650	9 mm (3/8") Black on White	24.10
ON443	12 mm (1/2") Black on White	26.40
OB654	18 mm (3/4") Black on White	31.40

See page 1621 for other available colours.

### REPLACEMENT BATTERIES

Model No.	Description	Price /Each
XB872	AA, Alkaline-24/pkg	18.72

## BROTHER® PT-D210BK LABEL MARKER

- Quickly create labels up to 12mm (1/2") wide
- Graphic display allows to review label before printing
- Powered by 6 AAA batteries or AC power adaptor (both sold separately)
- PC/Mac Compatibility: None
- Display Type: LCD
- Tape Sizes: 3.5 mm, 6 mm, 9 mm, 12 mm
- Tape Technology: Thermal • Tape Family: TZe
- Tape Length: 26.2' (8 m) • Keyboard Type: Qwerty
- Unit Dimensions (W x D x H): 15.7 cm x 15 cm x 6.9 cm
- Includes: One 0.47" (12 mm) x 13.1' (4 m) black on white TZe starter tape

Model No. OP888  
Price/Each \$76.60



### REPLACEMENT BATTERIES

Model No.	Description	Price /Each
XB873	AAA, Alkaline-24/pkg	20.64

### TZE TAPE CARTRIDGES

Model No.	Description	Price /Each
OB650	9 mm (3/8") Black on White	24.10
ON443	12 mm (1/2") Black on White	26.40
OP897*	12 mm (1/2") Black on White	33.10

See page 1621 for other available colours.  
\*TZEFX Tape

## BROTHER® PT-E300VP ADVANCED INDUSTRIAL HANDHELD LABELLER

- Large back-lit LCD display with application icons
- 5 label application keys to help reduce key strokes
- QWERTY keyboard
- Advanced serialization options
- Supports 9 industry standard linear barcodes
- Automatically sets the right size font and label size based on what you typed in
- Compatible with durable "TZe" laminated tapes up to 18 mm
- Supports 4 sizes of heat shrink tube tapes
- Easy to load, drop-in cartridge system
- Includes: Lithium-ion rechargeable battery, AC adapter, starter cassette, wrist strap and carrying case

Model No. ON750  
Price/Each \$175.00

brother  
at your side



### TZE TAPE CARTRIDGES

Model No.	Description	Price /Each
OB650	9 mm (3/8") Black on White	24.10
ON443	12 mm (1/2") Black on White	26.40
OB654	18 mm (3/4") Black on White	31.40
OP897*	12 mm (1/2") Black on White	33.10

See page 1621 for other available colours.  
\*TZEFX Tape

## BROTHER® PT-D600 PC-CONNECTABLE LABEL MAKER

- Quickly creates professional-looking labels using the built-in keyboard or connects to a computer to create more personalized labels
- A full-colour graphical display offers easy access to formatting menus as well as the ability to preview actual label appearance before printing
- Includes a 24 mm TZe starter tape, a USB cable and an AC power adapter
- Tape Sizes: 3.5 mm, 6 mm, 9 mm, 12 mm, 18 mm, 24 mm
- Display Type: LCD Colour • Keyboard Type: Qwerty
- Colour: Black • Tape Technology: Thermal Transfer
- Power Source: AC Adapter and Batteries
- Batteries: 6 AA (Not Included)
- Interface Connection: USB
- Tape Length: 8 m • Tape Family: TZe

Model No. OP196  
Price/Each \$142.00

### TZE TAPE CARTRIDGES

Model No.	Description	Price /Each
OB650	9 mm (3/8") Black on White	24.10
ON443	12 mm (1/2") Black on White	26.40
OB654	18 mm (3/4") Black on White	31.40
OB659	24 mm (1") Black on White	36.20

See page 1621 for other available colours.



## BROTHER® PT-E500VP ADVANCED INDUSTRIAL LABEL MARKER

- Designed for industrial applications
- Includes software to design and print custom labels from your computer or from download
- Allows to print labels from any database
- Powered by rechargeable Li-ion long life battery or AC power adaptor (both included)
- PC/Mac Compatibility: PC
- Keyboard Type: Qwerty
- Display Type: LCD
- Tape Sizes: 3.5 mm, 6 mm, 9 mm, 12 mm, 18 mm, 24 mm
- Tape Technology: Laminating Thermal
- Tape Family: HGe, TZe and HSe • Tape Length: 26.2' (8 m)
- Unit Dimensions (W x D x H): 12.6 cm x 25 cm x 9.4 cm
- Includes: Carrying case, AC adapter, rechargeable battery pack (BA-E001), wrist strap, and one 12 mm x 8 m black on white ID tape (TZeFX231)

**Model No. OP890**  
**Price/Each \$296.00**



brother  
at your side

## TZE TAPES FOR P-TOUCH® LABEL MAKERS

- 8 m (26.2') long

Model No.	Colour	Price /Each
<b>9 MM (3/8")</b>		
OB648	Black on Clear	21.70
OB650	Black on White	24.10
OB651	Blue on White	24.10
OB655	White on Black	28.70
OB667	Red on White	24.10

Model No.	Colour	Price /Each
<b>12 MM (1/2")</b>		
OB649	Black on Clear	23.30
ON443	Black on White	26.40
OB653	Blue on White	26.60
OB656	White on Black	31.40
OB657	Black on Yellow	26.40
OB668	Red on White	26.60

## BROTHER® PT-E550WVP ADVANCED INDUSTRIAL HANDHELD LABELLER

- Designed for industrial applications
- Wireless connectivity allows to transfer and store files from any database or computer
- Powered by rechargeable Li-ion long life battery or AC power adaptor (both included)
- Includes: Carrying case, AC adapter, rechargeable battery pack (BA-E001), wrist strap and one 12 mm x 8 m black on white ID tape (TZeFX231)
- Type of Label Printer: HandHeld
- PC/Mac Compatibility: PC
- Keyboard Type: Qwerty
- Power Source: Plug-In/Battery Operated
- Colour: Orange and Black
- Display Type: LCD
- Tape Sizes: 3.5 mm, 6 mm, 9 mm, 12 mm, 18 mm, 24 mm
- Tape Technology: Laminating Thermal
- Tape Family: HGe, TZe and HSe
- Tape Length: 26.2' (8 m)
- Unit Dimensions (W x D x H): 12.6 cm x 25 cm x 9.4 cm

**Model No. OP891**  
**Price/Each \$410.00**



### REPLACEMENT BATTERIES

**Model No. XB872**  
AA, Alkaline-24/pkg  
**Price/Each \$18.72**

brother  
at your side

Model No.	Colour	Price /Each
<b>18 MM (3/4")</b>		
OB661	Black on Clear	28.70
OB654	Black on White	31.40
OB663	Blue on White	31.40
OB662	White on Black	36.20
OB666	Black on Yellow	31.40
OB669	Red on White	31.40

Model No.	Colour	Price /Each
<b>24 MM (1")</b>		
OB658	Black on Clear	32.80
OB659	Black on White	36.20
OB664	Blue on White	36.20
OB660	Black on Yellow	36.20
OB670	Red on White	36.20

## BROTHER® QL-820NWB LABEL PRINTER

- Create paper labels for packages and name badges
- Flexible connectivity features the Mfi Bluetooth® technology and a wireless interface
- Print from your computer or mobile device
- Powered by AC power adaptor (included) or rechargeable Li-ion long life battery (sold separately)
- Does not require ink or toner
- PC/Mac Compatibility: PC & Mac
- Keyboard Type: Qwerty
- Display Type: LCD
- Tape Sizes: Die-cut and Continuous
- Maximum Tape Width: 2.4" (62 mm)
- Maximum Print Width: 2.3"
- Unit Dimensions (W x D x H): 12.5 cm x 23.4 cm x 14.5 cm
- Includes: USB cable, AC adapter, 100 die-cut standard address labels (DK-120), and 2.4" continuous length black/red tape on white paper tape 16.4 ft. (DK-2251)

**Model No. OP894**  
**Price/Each \$268.00**



brother  
at your side

## DK TAPES & LABELS FOR QL LABEL PRINTERS

brother  
at your side

Model No.	Series	Description	Price /Each
OJ914	DK1201	Tape Cartridge for QL Label Printers	20.00
ON756	DK1204	Multi Purpose Labels (400) 17 mm x 54 mm (2/3" x 2 1/8")	20.00
ON758	DK1208	Large Address Labels (400) 38 mm x 90 mm (1 1/2" x 3 1/2")	27.60
ON759	DK1209	Small Address Labels (800) 29 mm x 62 mm (1 1/7" x 2 3/7")	34.90
ON761	DK2205	Continuous Length Paper Tape 62 mm x 30.48 m (2 3/7" x 100')	37.20
OP898	DK2251	Labels 62 mm x 15.2 m (2.4" x 50')	49.90



## BROTHER® QL-110NWB WIDE FORMAT LABEL PRINTER

- Connect via wireless, Ethernet & Bluetooth® wireless technology
- Prints on labels up to 4" wide, capable of printing shipping postage labels for packages
- Automatic Crop function lets on-line sellers easily print product and other barcode labels from A4/Letter size label sheet templates (Windows only)
- Offers a USB Host interface for use with a peripheral such as a scanner
- Print up to 69 standard address labels per minute with black text at 300dpi
- Create and print labels from a mobile device when connected to a wireless network
- Easy to integrate and manage on a network using Brother's network management tools and free software development kits (SDKs are available for Windows, iOS and Android operating systems)
- Windows, Linux, and Mac® compatible
- Convenient, drop-in tape rolls
- Up to 300 x 300 dpi print resolution, for crisp text and graphics
- Type of Label Printer: Desktop
- PC/Mac Compatibility: PC & Mac
- Keyboard Type: None
- Power Source: Plug-in
- Maximum Label Width: 4"

**Model No. PG292**  
**Price/Each \$407.00**



brother  
at your side



# LABEL MAKERS

## LABELMANAGER® 210D ELECTRONIC LABELLERS

- Easy navigation
- Large graphical display shows text effects on screen before you print
- Prints 1/4", 3/8", 1/2" widths
- 6 font sizes, 7 styles and 8 different boxes to customize your label
- Quick access buttons to symbols and diacritical's (i.e. é, à, ç,...)
- Auto power-off to extend battery life
- Requires 6 AA batteries not included and one horizontal character wheel



**DYMO®**

Model No.	Description	Price /Each
<b>0N370</b>	210D LabelManager®	<b>86.60</b>
<b>0J733</b>	3/8" (9 mm) Black/White Label	<b>26.80</b>
<b>0B699</b>	1/2" (12 mm) Black/White Label	<b>28.40</b>
<b>XB872</b>	AA Batteries 24/pack	<b>18.72</b>

## COLD-LAMINATING SYSTEMS

- Heat-free way to finish your documents in one system
- No warming, waiting, damaging heat or irritating fumes
- No special equipment or tools needed
- Easy 3-step operation: load, turn handle and trim
- Aggressive adhesive holds items securely in place
- To protect business cards, ID's, luggage tags
- Refill cartridges & supply rolls easy to select
- Smart design makes them easy to install
- One year limited warranty



**3M**

Model No.	Description	Price /Each
<b>0E660</b>	8 1/2" Wide System	<b>258.45</b>
<b>0E661</b>	System Cartridge Refills, 100/Roll, 100 Applications Front and Back Lamination	<b>78.39</b>
<b>0E662</b>	12" Wide System	<b>421.95</b>
<b>0E663</b>	System Cartridge Refills, 100/Roll, 100 Applications Front and Back Lamination	<b>120.10</b>

## GBC® FUSION™ 3100L LAMINATOR

- Warm-Up Time: 1 min.
- Laminating Speed: 31" per minute
- Maximum document width of 12"
- Compatible with 3, 5 and 7 mil thermal pouches
- Includes 30 UltraClear™ letter size laminating pouches

Model No. OP833  
Price/Each \$367.00



## GBC® FUSION™ 1100L LAMINATOR

- Warm-Up Time: 3 min.
- Laminating Speed: 13" per minute
- Maximum document width of 9"
- Compatible with 3 and 5 mil thermal pouches
- Includes 10 UltraClear™ letter size laminating pouches

Model No. OP830  
Price/Each \$216.00



## LETRATAG® 100H PLUS PORTABLE LABEL PRINTER

- Small, sleek and super portable
- Choose from 5 font sizes, 7 print styles and 8 box styles
- Graphical display lets you see font effects on screen
- 13-character LCD screen
- 9-label memory and 2-line printing
- Auto power off function for energy saving
- Includes: (2) LT black on white 1/2" paper label cassette, Magnetic holder, User manual, Registration card
- Type of Label Printer: HandHeld
- PC/Mac Compatibility: None
- Keyboard Type: ABCD
- Power Source: Battery Operated
- Manufacturer's Warranty: 1 Year Limited
- Print Method: Direct Thermal
- Power Supply: 4 x AA
- Tape Width: 1/2"

Model No. OQ977  
Price/Each \$53.30



**DYMO®**

### LABELS

Model No.	Mfg No.	Type of Labels	Colour	Price /Each
<b>0D621</b>	91330	1/2" Paper	Black on White	<b>8.30</b>
<b>0N377</b>	16952	1/2" Plastic	Black on Clear	<b>14.30</b>
<b>0D622</b>	91331	1/2" Plastic	Black on White	<b>10.70</b>
<b>0J726</b>	91333	1/2" Plastic	Black on Red	<b>11.20</b>
<b>0J501</b>	91335	1/2" Plastic	Black on Blue	<b>10.70</b>
<b>0D623</b>	91332	1/2" Plastic	Black on Yellow	<b>10.70</b>
<b>0D627</b>	91338	1/2" Metallic	Black on Silver	<b>10.70</b>

### AA BATTERIES, PACK OF 24

Model No. XB872 Price/Each \$18.72

## GBC® ULTRACLEAR™ LAMINATING LETTER POUCHES

- Suitable with any thermal pouch laminator
- Provides clean and professional results
- All pouches have rounded corners



Model No.	Pouch Thickness	Pouch Length	Pouch Width	Colour	Quantity Per Pack	Price /Each
<b>0P831</b>	3 mils	11-1/2"	9"	Clear	50	<b>44.00</b>
<b>0P862</b>	5 mils	11-1/2"	9"	Clear	100	<b>77.00</b>

## GBC® ULTRACLEAR™ LAMINATING BUSINESS CARD POUCHES

- Suitable with any thermal pouch laminator
- Provides clean and professional results
- All pouches have rounded corners
- Pouch Thickness: 5 mils
- Pouch Length: 3-11/16"
- Pouch Width: 2-3/16"
- Colour: Clear
- Quantity Per Pack: 100

Model No. OP832  
Price/Each \$24.20





## VELCRO® BRAND STICKY BACK ROLLS

- Both Hook and Loop components supplied in package
- Hook and Loop Material: Nylon
- Applications: Apparel, office folders, stationery, rigid packaging and trays, medical equipment



OP787



OP764



OP641

Model No.	Mfg. No.	Width"	Length'	Colour	Price /Each
OP641*	90677C	3/4	5	Black	10.30
OP642*	90678C	3/4	5	White	10.30
OP787*	90081C	3/4	15	Black	27.90
OP788*	90082C	3/4	15	White	27.50
OP764	91789	3/4	15	Black	27.60
OP765	91790	3/4	15	White	27.20

\*Ideal for smooth indoor surfaces

## VELCRO® BRAND ONE-WRAP®

- Ideal for other applications requiring a strong, durable, adjustable and reusable self-engaging fastener
- Self-engaging
- Strong, reusable ONE-WRAP® fasteners feature hook and loop laminated back to back without glue, so there's no chemical residue
- Hook Material: Polypropylene
- Loop Material: Nylon
- Applications: Cable management, medical equipment bundling and materials handling



OP622



OP628



OP630

Model No.	Mfg. No.	Width"	Length	Colour	Quantity Per Pack	Price /Each
<b>TAPE</b>						
OP622	189755	1/2	25 yds	Black	-	46.30
OP623	189590	1	25 yds	Black	-	74.60
<b>ROLLS</b>						
OP628	90340C	3/4	12'	Black	-	10.00
OP629	91372C	1 1/2	30'	Black	-	23.50
<b>TIES</b>						
OP630	90438C	1/2	8"	Multicolour*	5	4.65
OP627	90927C	1/2	8"	Black	25	5.85
OP631	90700C	7/8	23"	Black	3	5.60

\* Colours included: Blue, green, yellow, orange and red

## SELF-ENGAGING VELCRO® BRAND QWIK TIES

- Ideal for other applications requiring an adjustable and reusable self-engaging fastener
- VELCRO® Brand Qwik Ties self-gripping fasteners are ideal for cable management applications
- Colour: Black
- Width: 3/4"
- Length: 25 yds
- Hook Material: Polypropylene
- Loop Material: Nylon
- Applications: Cable management, medical equipment bundling and materials handling

Model No. OP759  
Mfg. No. 5111223  
Price/Each \$32.20



## VELCRO® BRAND INDUSTRIAL STRENGTH

- Both Hook and Loop components supplied in package
- Low profile
- Easy to use
- 30% thinner than regular hook and loop
- Heavy-duty and water resistant
- Designed for both indoor and outdoor use
- Features a molded "plastic" hook for significantly more holding power than regular woven hook and loop
- Base Material: Nylon
- Applications: Apparel, office folders, stationery, hanging tools, wall hangings, rigid packaging and trays



OP632

Model No.	Mfg. No.	Width"	Length	Colour	Quantity Per Pack	Price /Each
<b>STRIPS</b>						
OP632	90199C	2	4"	Black	2	4.58
OP633	90200C	2	4"	White	2	4.58
<b>TAPE</b>						
OP634	90593C	2	4'	Black	1	13.60
OP635	90595C	2	4'	White	1	13.60
OP636	90197C	2	15'	Black	1	40.30
OP637	90198C	2	15'	White	1	39.90

## VELCRO® BRAND INDUSTRIAL STRENGTH-EXTREME STRIPS

- Both Hook and Loop components supplied in package
- Features a molded "plastic" hook for significantly more holding power than regular woven hook and loop
- Offers superior holding power without drilling, nails, screws or epoxy
- Strips per pack: 5
- Colour: Titanium
- Width: 1"
- Length: 4"
- Base Material: Nylon
- Applications: Apparel, office folders, stationery, rigid packaging and trays

Model No OP638

Mfg. No. 90800C

Price/Each \$5.72



## VELCRO® BRAND VELCOIN® TAPE

- Peel and stick coins provide VELCRO® Brand convenience in a precut fastener
- Base Material: Nylon
- Applications: Apparel, office folders, stationery, rigid packaging and trays



OP620

Model No.	Mfg. No.	Coins Per Roll	Colour	Suggested Paired Component	Price /Each
<b>HOOK 88 TAPE</b>					
OP620	157654	3/4	1028	Black	91.70
OP766	157658	3/4	1028	White	91.70
<b>LOOP 1000 TAPE</b>					
OP621	157655	3/4	1028	Black	91.70
OP767	157659	3/4	1028	White	91.70

# OFFICE SUPPLIES & EQUIPMENT

## TIME CLOCKS

- Large, easy-to-read analog clock face
- LED display of year, month and date
- Automatic or manual printing
- Print window with light
- Automatically adjusts for Daylight Savings Time, short months, leap years and power outages
- Selectable for 4-digit imprint
- Built-in battery backup



### SPECIFICATIONS:

**Power Supply:** 110/120 AC  $\pm$  10% (50/60 Hz)  
**Power Consumption:** Normal 3 W, Max. 12 W  
**Ambient Temp.:** 14°F - 113°F (-10°C - 45°C)  
**Humidity:** 10% - 90% (no condensation)  
**Dimensions:** 6 3/4" W x 6 1/4" D x 8" H  
 (150 mm x 172 mm x 165 mm)  
**Weight:** 6 lbs. (2.7 kg)

Model No.	Description	Price /Each
HN140	English	749.00

## ATOMIC TIME CLOCKS

- Type of Punch Clock: Digital
- Prints in multiple languages including English and French
- Cartridge ribbon for easy change
- Ribbon Colour: Black
- Illuminated print window and guide improves efficiency on time card stamping
- Locking enclosure prevents tampering with settings and reduces time card fraud
- Ability to synchronize to the atomic clock
- Voltage: 100 - 240 V
- Ambient Temperature: -10°C to 45°C
- Humidity: 10% to 90% (no condensation)
- Unit Dimensions: 5.5" W x 6.9" D x 6.1" H

**Model No. OP446**

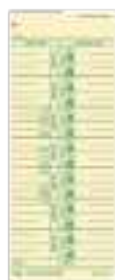
**Price/Each \$569.00**



## TIME CLOCK ACCESSORIES

- Card rack is adjusted for standard 8 1/4" long cards
- Fits 25 standard time cards
- Rack is adjustable to accommodate cards of different widths

HA001



HA004



Model No.	Description	Price /Each
HA004	Card Rack	64.00
HA001	1000 Time Cards, English	109.00
HA020	1000 Time Cards, French	109.00
HN141	Replacement Ribbon for Time Clock	43.00

## ATOMIC WALL CLOCK

- Self-adjusting and self-setting atomic clock
- 8 Time Zones: PST, MST, CST, EST, AST, NST, HST, and AKST
- Display: 12 or 24 hour time format with indoor temperature display in Celsius or Fahrenheit
- Easy to read 4"H display
- Option to turn on or off Daylight Savings Time
- Dimensions: 9" W x 1.5" D x 5.7" H
- Case Material: Plastic
- Mount Type: Wall
- Batteries Included: 2 x AA

OP582



**MARATHON**

Model No.	Colour	Price /Each
OP582	Silver	74.70
OP583	Brown	74.70

## WALL CLOCKS

### 12/24 H BATTERY OPERATED

- 12" diameter round office wall clock
- 12/24 hour
- Uses 1 AA battery
- Glass face
- Black plastic frame

**Model No. HT072**  
**Price/Each \$28.45**

**MATRIX**  
INDUSTRIAL PRODUCTS

HT072



### 12 H BATTERY OPERATED

- 14" diameter quartz clock
- Silent quartz movement with second hand
- Uses 1 AA battery
- Glass face
- Chrome frame

**Model No. HT071**  
**Price/Each \$62.00**

**Dainolite**

HT071



### 12 H BATTERY OPERATED

- 12-3/4" diameter round office wall clock
- Wall mount
- Uses 1 AA battery
- Plastic face
- Black/Chrome frame

**Model No. OP237**  
**Price/Each \$28.45**

**MATRIX**  
INDUSTRIAL PRODUCTS

OP237



## JUMBO DIGITAL WALL CLOCK

- Large 17" display
- Visibility from 30' away
- Displays (indoor) temperature in Celsius or Fahrenheit
- Calendar displays month, date and day of the week
- 12 or 24-hour settings
- This wall clock has an atomic self-adjusting feature that picks up time calibration signals automatically
- Clean, brushed-aluminum-look plastic frame
- Mount on your wall or use the built-in stand to place on a flat surface
- Includes three C batteries
- 16.5" (42 cm) W x 1.7" (4.4 cm) D x 11" (27 cm) H"
- Main display features 4.7" (12 cm) digits for easy viewing
- Sub display and seconds measure 2.1" (5.23 cm)

**Model No. XD075**  
**Price/Each \$126.00**



**MARATHON**

## JUMBO ATOMIC WALL CLOCK

- Self-adjusting and self-setting atomic clock
- 7 Languages: English, Russian, Dutch, French, German, Italian, and Spanish
- Display: 12 or 24 hour time format, day, date, indoor temperature, and humidity
- Displays 5" tall clock digit
- Dimensions: 17" W x 1" D x 11" H
- Case Material: Plastic
- Mount Type: Surface/Wall
- Batteries Included: 4 x AA

OP590



**MARATHON**

Model No.	Colour	Price /Each
OP590	Black	164.00
OP591	Silver	164.00

## CLOCK

- Digital wall clock with temperature and humidity display
- Easy to read display with ambient light sensor
- Alarm and snooze function
- Features a fold out table stand
- Dimensions: 9.5" W x 2.5" D x 6.3" H
- Power Supply: Battery Operated
- Mount Type: Wall
- Clock Type: Digital
- Case Material: Plastic
- Display: Time, day, month, date and indoor temperature and indoor humidity
- 6 Time Zones: Pacific, Mountain, Central, Eastern, Atlantic, and Newfoundland
- 7 Languages: English, Danish, Dutch, French, German, Italian, and Spanish
- Batteries Included: 2 x C



OP584

Model No.	Mfg. No.	Case Colour	Price /Each
OP584	CL030052BK	Black	107.00
OP585	CL030052WH	White	107.00
OP586	CL030052GG	Silver	107.00

## DESKTOP CLOCK

- Blue backlight is gentle on the eyes
- Alarm and snooze function
- Dimensions: 3.6" W x 1.5" D x 3.6" H
- Power Supply: Battery Operated
- Mount Type: Surface
- Clock Type: Digital
- Case Material: Plastic
- Display: 12 or 24 hour time format, calendar, and temperature
- 7 languages: English, Dutch, French, Spanish, Italian, Danish, and German
- Digit Size: 1.25"
- Batteries Included: 1 x AA
- Depth: 1.5"



OP585

Model No.	Mfg. No.	Case Colour	Price /Each
OP595	CL030050BK	Black	21.30
OP596	CL030050WH	White	21.30
OP597	CL030050BL	Blue	21.30
OP598	CL030050PI	Pink	21.30

## JUMBO PANORAMIC CLOCK

- Features a sleek, modern design that looks great with all styles of decor
- Can be wall-mounted or displayed on a desktop with its built-in foldable stand, making it ideal for home, office and workstation settings
- Atomic feature ensures that the time, day and date are always accurate
- Displays indoor temperature
- Includes: (2) AA batteries
- Dimensions: 19.5" W x 3" D x 11" H
- Power Supply: Battery Operated
- Mount Type: Wall
- Clock Type: Digital
- Case Material: Plastic
- Case Colour: Black
- Weight: 4.1 lbs.



OQ829

Model No. OQ829  
Mfg. No. CL030033JUMBO- BK  
Price/Each \$146.00

MARATHON

## ROUND CLOCK

- Featuring a high contrast 6.5-Inch LCD display, this digital clock is perfect for office, classroom, lab or home use
- Integrated keyholes for easy wall-mounting or sits upright for desktop use with its fold-out stand
- Covered by a two-year limited warranty
- Includes: (3) AA batteries
- Dimensions: 6.5" Dia.
- Power Supply: Battery Operated
- Mount Type: Surface, Wall
- Clock Type: Digital
- Case Material: Stainless Steel



OQ830

OQ830

MARATHON

Model No.	Mfg. No.	Case Colour	Price /Each
OQ830	CL030069SS	Silver	85.30
OQ831	CL030069BS	Black	85.30

## JUMBO CLOCK

- Visible from 30' away
- Displays indoor temperature in Celsius or Fahrenheit
- Calendar displays month, date and day of the week
- 12 or 24-hour settings
- This wall clock has an atomic self-adjusting feature that picks up time calibration signals automatically
- Mount on your wall or use the built-in stand to place on a flat surface
- Main display features 4.7" (12cm) digits for easy viewing
- Sub display and seconds measure 2.1" (5.23cm)
- Dimensions: 16.5" W x 1.7" D x 11" H
- Power Supply: Battery Operated
- Mount Type: Surface, Wall
- Clock Type: Digital
- Case Material: Plastic
- Batteries Included: 3 x C



OQ920

Model No.	Mfg. No.	Case Colour	Price /Each
OQ920	CL030025BK	Black	126.00
OQ921	CL030025WH	White	126.00
OQ922	CL030025WD	Brown/Wood	126.00

## LED ALARM CLOCK

- Features 2 USB charging stations
- Alarm and snooze function
- AC adapter and battery backup included
- Dimensions: 6" W x 3.25" D x 2" H
- Power Supply: Battery Operated, Plug-in
- Mount Type: Surface
- Clock Type: Digital
- Case Material: Plastic
- Display: 12 or 24 hour time format
- Display Modes: High, low or off
- Digit Size: 1"
- Batteries Included: 2 x AA



OP601

Model No.	Mfg. No.	Case Colour	Price /Each
OP601	CL030055CO	Brown	74.70

## MINI NON-TICKING ALARM CLOCK

- Features an elegant, classic design with a modern touch
- Compact design makes it ideal for home or travel
- Ambient light sensor ensures the face of the clock is illuminated in the dark and easy to read
- Sweeping second hand does not emit an audible tick
- Includes: (2) AA batteries
- Dimensions: 2.3" Dia.
- Power Supply: Battery Operated
- Mount Type: Surface
- Clock Type: Analog
- Case Material: Plastic



OQ832

OQ832

MARATHON

Model No.	Mfg. No.	Case Colour	Backlight Colour	Price /Each
OQ832	CL030065BK-BK2	Black	Black	32.50
OQ833	CL030065BK-WH2	Black	White	32.50
OQ834	CL030065BL-WH2	Blue	White	32.50
OQ835	CL030065WH-WH2	White	White	32.50

## JUMBO ATOMIC CLOCK

- Does not emit a ticking sound
- Light sensor is triggered when placed in low light
- Dimensions: 11.75" W x 2" D x 11.75" H
- Power Supply: Battery Operated
- Mount Type: Wall
- Clock Type: Analog
- Case Material: Plastic
- Batteries Included: 1 x AA and 2 x C
- Depth: 2"



OP603

OP603

MARATHON

Model No.	Mfg. No.	Case Colour	Dial Colour	Price /Each
OP603	CL030057BK-BK	Black	Black	107.00
OP604	CL030057WH-WH	White	White	107.00
OP605	CL030057BK-WH	Black	White	107.00



# OFFICE SUPPLIES & EQUIPMENT

## PERMANENT MARKERS

### SHARPIE® LIQUID TIP

- Instant drying, writes on all surfaces
- Waterproof



Model No.	Tip	Colour	Price /Each
OB947	Chisel	Black	1.96

### #15 SHARPIE FINE

- Fine point marker
- High visibility ink
- 6 dozen/case
- Large ink supply
- Extra tough tip that won't spread or mush
- Bold, fine tips makes impressive marks
- Fade and water resistant
- Ink dries quickly



Model No.	Colour	Price /Each
<b>SHARPIE® FINE</b>		
PA393	Black	1.61
PA395	Blue	1.61
PA396	Green	1.54
PA397	Purple	1.54
PA392	Red	1.61
PA394	Orange	1.54
<b>ULTRAFINE SHARPIE®</b>		
OTJ964	Black	1.54
OTJ965	Red	1.54
OTJ966	Blue	1.54
<b>SUPER SHARPIE®</b>		
OD376	Black	2.34
OD377	Red	2.34
OD378	Blue	2.34

### SHARPIE® INDUSTRIAL MARKERS

- Resists chemicals, light and heat up to 500°F
- Writes on glass, metal, greasy parts
- For industrial use
- Fine point
- Black



Model No. OTJ874 Price/Each \$1.64

### LUMOCOLOR® PERMANENT MARKERS

- Dry Safe ink: can be left uncapped for days without drying out
- Fine point
- Black



Model No. OB386 Price/Each \$2.90

### MARKS-A-LOT PERMANENT MARKERS

- Chisel tip
- Comfortable grip
- Water-resistant, smear-proof
- Writes on any surface
- Non-toxic
- Black



Model No. OD458 Price/Each \$1.21

### AVERY HI-LITER®

- Replaces underlining
- Long lasting
- Quick drying
- Available in 4 colours

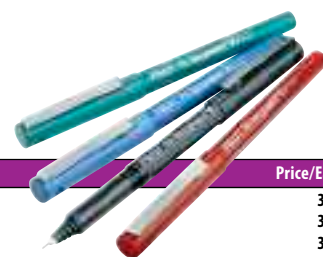


Yellow	Pink	Model No.	Blue	Green	Type	Price /Each
OB939	OB940	OB941	OB942		Fluorescent	1.10

## BALLPOINT PENS

### "HI-TECPOINT V" ROLLING BALLPOINT PENS

- Liquid ink
- Ultra-fine point



Model No.	Colour	Price/Each
OTI657	Blue	3.06
OTI658	Black	3.06
OTI659	Green	3.06
OTI662	Red	3.06

### BALLPOINT PENS

- Box of 12



	Blue Model No.	Black Model No.	Price /Box
Fine point	OTI152	OTI154	3.72
Medium point	OTI148	OTI150	3.32

### BALLPOINT PENS

- Rubberized grip



	Fine Point Model No.	Black Medium Point Model No.	Price /Each
Regular	-	OTI203	0.81
Retractable	OK596	OTI209	1.01

### PAPER MATE® INKJOY™ 3000RT PEN

- Features Paper Mate's revolutionary Injoy™ writing system for effortless writing
- Rubberized grip for optimal comfort
- Style: Retractable
- Grip: Rubberized
- Point: Medium
- Point Size: 1 mm



Model No.	Colour	Price/Each
OP971	Blue	0.66
OP972	Black	0.66
OP973	Red	0.66

## OMNICHROM 108

- All purpose marking pencil
- Writes on virtually any surface, ie. glass, plastics, wood, polished stone and metal
- Lines can be removed from glossy surface without leaving a trace
- Non-penetrating leads are water-soluble and highly break resistant



Priced per Pencil

Model No.	Lead Color	Price /Each
OB606	White	2.23
OB607	Red	2.30
OB609	Black	2.34
OB610	Yellow	2.36
OB611	Blue	2.36

## PAPER MATE® HB CANADIANA PENCIL

- Quantity per Pack: 24
- Type: HB #2 Pencil
- Features a smooth lead core that sharpens to a fine, exact point for accurate writing
- Point Size: HB
- Available in 6 brilliant colours



## MIRADO PENCILS

- Box of 12



Model No.	Degree of Hardness	Price /Box
OP976		3.80
OC957	HB	3.61



## CALCULATORS

### METRIC CALCULATOR

- Power Supply: Solar & Battery
- Display Digits: 10
- Display Type: LCD
- Calculator Type: Flat

**Model No. OM900**  
**Price/Each \$22.30**



### POCKET CALCULATORS

- 8-digit display
- Solar and battery powered

**Model No. OTK387**  
**Price/Each \$8.54**



## OFFICE TAPE & DISPENSERS

OL205



### DESKTOP TAPE DISPENSERS

- Anti-skid bottom
- 1" core
- Colour: Black

Model No.	Description	Wt. lbs.	Price /Each
OL205	1/2" (12 mm), 3/4" (19 mm)	2	4.98



OC147

### TRANSPARENT TAPE

- Scotch 600 series, Highland 500 series

Description	Model No. Scotch	Price /Each	Model No. Highland	Price /Each
12 mm x 33 m w/Dispenser	OC142	4.57	OC147	1.78
19 mm x 32.9 m w/Dispenser	OC143	4.64	OC144	1.85
12 mm x 33 m Refill Roll	OC145	3.44	OC146	0.98
19 mm x 32.9 m Refill Roll	OC148	4.28	OC150	1.04

### TRANSPARENT & INVISIBLE (MAGIC™ TAPE)

- Scotch 810 series, Highland 6200 series

Description	Model No. Scotch	Price /Each	Model No. Highland	Price /Each
12 mm x 33 m w/Dispenser	OC152	3.89	-	-
19 mm x 32.9 m w/Dispenser	OC154	5.06	OC155	2.77
12 mm x 33 m Refill Roll	OC156	3.28	-	-
19 mm x 32.9 m Refill Roll	OC158	4.57	OC159	2.15

## STRAIGHT SCISSORS

- All purpose economical scissors with stainless steel blades
- Plastic handles
- Ideal for light-duty cutting.



Model No.	Overall Length"	Cut Length"	Price /Each
OE018	8	3 1/4	3.21

## ROTEX RUBBER BANDS

- Packed 1/4 lb. per box
- 85% rubber content



Priced per Box

Model No.	Mfg. No.	Dimensions L" x W"	Price /Each
OB960	16	2 1/2 x 1/16	3.19
OB962	19	3 1/2 x 1/16	3.19
OB965	32	3 x 1/8	3.19
OB966	33	3 1/2 x 1/8	3.19
OB970	64	3 1/2 x 1/4	3.19

## FOLDBACK CLIPS

- Box of 12



Model No.	Size	Capacity	Price/Each
OG978	1/2"	1/4"	1.16
OT308	3/4"	5/16"	1.16
OT309	1"	3/8"	1.68
OT313	1 1/4"	5/8"	2.46
OT310	1 5/8"	7/8"	4.14
OT314	2"	1"	5.80

## SMARTTOUCH™ 2-HOLE PUNCH

- Soft grip handle and durable metal construction
- Features an edge guide for better punch alignment
- Sheet Capacity: 20
- Hole Diameter: 9/32"
- Material: Metal
- Colour: Black and Grey
- Dimensions: 2.25" L x 5.75" W x 4.25" H
- 8.5" to 11" extendable paper guide included

**Model No. OP827**  
**Price/Each \$34.30**

Swingline®



## SMARTTOUCH™ 3-HOLE PUNCH

- Soft grip handle and durable metal construction
- Features an built-in ruler and edge guide for better punch alignment
- Sheet Capacity: 20
- Hole Diameter: 9/32"
- Material: Metal
- Colour: Black and Grey
- Dimensions: 12.25" L x 4.75" W x 2.5" H

**Model No. OP828**  
**Price/Each \$46.40**

Swingline®



## LEFT & RIGHT HANDED CORRECTION TAPE

- 180° swivel head for left and right handed application
- One line
- Disposable
- 5 mm x 5 m

**Model No. OTE427**  
**Price/Each \$3.83**



## LIQUID PAPER

- White, 18ml.

Model No.	Description	Price /Each
OB951	Regular	2.35



## CORRECT-IT CORRECTION TAPE

- Disposable
- 4.2 mm x 8.5 m.

**Model No. OF919**  
**Price/Each \$5.41**





## RITE IN THE RAIN® HARD COVER NOTEBOOK

- Fabrikoid case-bound books are designed to resist sweat, rain, mud, snow, oil, grease and the extreme wear-and-tear of daily use
- Pages sewn-in for perfect binding
- Number of Pages: 160
- Binding Type: Case-Bound



QO386

Model No.	Mfg. No.	Dimensions			Cover Colour	Paper Colour	Price /Each
		L"	x	W"			
QO360	370F	7-1/4	x	4-5/8	Yellow	White	36.40
QO385	970F	7-1/4	x	4-5/8	Green	Green	36.40
QO386	970TF	7-1/4	x	4-5/8	Tan	Tan	36.40
QO387	770F	7-1/4	x	4-5/8	Black	Grey	36.40
QO361	370F-LG	8-3/4	x	6-3/4	Yellow	White	46.20
QO388	970F-LG	8-3/4	x	6-3/4	Green	Green	46.20
QO389	970TF-LG	8-3/4	x	6-3/4	Tan	Tan	46.20
QO390	770F-LG	8-3/4	x	6-3/4	Black	Grey	46.20
QO362	370F-MX	11	x	8-1/2	Yellow	White	54.70
QO391	970F-MX	11	x	8-1/2	Green	Green	54.70
QO392	970TF-MX	11	x	8-1/2	Tan	Tan	54.70
QO393	770F-MX	11	x	8-1/2	Black	Grey	54.70

## RITE IN THE RAIN® POCKET NOTEBOOK KIT

- Notebook cover made from CORDURA® fabric holds 4 writing tools and features zippered closure
- Yellow and Black Notebook Kits include All-Weather Black Pen & Black Notebook Pouch
- Green and Tan Notebook Kits include All-Weather Black Pen & Tan Notebook Pouch
- Number of Pages: 100
- Binding Type: Spiral



QO402

Model No.	Mfg. No.	Dimensions			Cover Colour	Paper Colour	Price /Each
		L"	x	W"			
QO364	135B-KIT	5	x	3	Yellow	White	72.90
QO397	935-KIT	5	x	3	Green	Green	72.90
QO398	935T-KIT	5	x	3	Tan	Tan	72.90
QO399	735B-KIT	5	x	3	Black	Grey	72.90
QO365	146B-KIT	6	x	4	Yellow	White	75.80
QO400	946-KIT	6	x	4	Green	Green	75.80
QO401	946T-KIT	6	x	4	Tan	Tan	75.80
QO402	746B-KIT	6	x	4	Black	Grey	75.80

## RITE IN THE RAIN® TOP-BOUND MEMO

- Field-Flex cover material allows for utmost notebook flexibility
- Paper tough enough to withstand the harshest and wettest conditions yet can be torn like heavy paper
- Page edges rounded in corners and are flush with cover
- Cover Material: Soft Cover
- Binding Type: Perfect
- Number of Pages: 100
- Dimensions: 5-1/4" L x 3-1/4" W



QO363

Model No.	Mfg. No.	Cover Colour	Paper Colour	Price /Each
QO363	378	Yellow	White	10.90
QO394	978	Green	Green	10.90
QO395	978T	Tan	Tan	10.90
QO396	778	Black	Grey	10.90

## RITE IN THE RAIN® BOUND NOTEBOOK

- Notebook will resist sweat, rain, mud, snow, oil, grease and the wear-and-tear of daily use
- Page edges rounded in corners and are flush with cover
- Field-Flex cover material allows for utmost notebook flexibility
- Paper tough enough to withstand the harshest and wettest conditions yet can be torn like heavy paper
- Number of Pages: 128
- Binding Type: Perfect
- Dimensions: 7-1/4" L x 4-5/8" W



QO413

Model No.	Mfg. No.	Cover Colour	Paper Colour	Price /Each
NKF441	374	Yellow	White	27.70
QO413	974	Green	Green	27.70
QO414	974T	Tan	Tan	27.70
QO415	774	Black	Grey	27.70

## RITE IN THE RAIN® POCKET TOP-SPIRAL NOTEBOOK

- Compact and flexible enough to slip into a pocket
- Notebook will resist sweat, rain, mud, snow, oil, grease and the wear-and-tear of daily use
- Impact-resistant Wire-O binding won't lose its shape
- Durable PolyDura cover defends against weather and wear
- Cover Material: PolyDura Cover
- Number of Pages: 100
- Binding Type: Spiral



OQ409

Model No.	Mfg. No.	Dimensions L" x W"	Cover Colour	Paper Colour	Price /Each
NKF437	135	5 x 3	Yellow	White	7.29
OQ404	935	5 x 3	Green	Green	7.29
OQ405	935T	5 x 3	Tan	Tan	7.29
OQ406	735	5 x 3	Black	Grey	7.29
NKF438	146	6 x 4	Yellow	White	9.19
OQ407	946	6 x 4	Green	Green	9.19
OQ408	946T	6 x 4	Tan	Tan	9.19
OQ409	746	6 x 4	Black	Grey	9.19

## RITE IN THE RAIN® SIDE-SPIRAL NOTEBOOK

- Impact-resistant PolyDura cover protects from scratches and stains
- Notebook will resist sweat, rain, mud, snow, oil, grease and the wear-and-tear of daily use
- Cover Material: PolyDura Cover
- Binding Type: Spiral



OQ357

Model No.	Mfg. No.	Dimensions L" x W"	Cover Colour	Number of Pages	Price /Each
NKF439	353	6 x 4	Yellow	64	14.70
NKF440	373	7 x 4-5/8	Yellow	64	14.70
OQ410	973	7 x 4-5/8	Green	64	14.70
OQ411	973T	7 x 4-5/8	Tan	64	14.70
OQ412	773	7 x 4-5/8	Black	64	14.70
OQ357	373-MX	11 x 8-1/2	Yellow	84	36.40
OQ376	973-MX	11 x 8-1/2	Green	84	36.40
OQ377	973T-MX	11 x 8-1/2	Tan	84	36.40
OQ378	773-MX	11 x 8-1/2	Black	84	36.40

## RITE IN THE RAIN® STAPLED NOTEBOOK

- Compact, flexible enough to slip into a pocket, and has a durable cover that defends against weather and wear
- Notebook will resist sweat, rain, mud, snow, oil, grease and the wear-and-tear of daily use
- Width: 4-5/8"
- Length: 7"
- Cover Type: Soft Cover
- Colour: Yellow
- Number of Pages: 48
- Binding Type: Stapled
- Paper Colour: White
- Qty/Pkg.: 3
- Sold/Priced Per: Package



OQ542

Model No.	Mfg. No.	Paper Pattern	Price /Each
OQ542	391FX	Journal	29.50
OQ548	311FX	Level	29.50
OQ547	351FX	Field	29.50

## RITE IN THE RAIN® STAPLED NOTEBOOK

- Compact, flexible enough to slip into a pocket, and has a durable cover that defends against weather and wear
- Notebook will resist sweat, rain, mud, snow, oil, grease and the wear-and-tear of daily use
- Qty/Pkg.: 3
- Cover Material: Soft Cover
- Binding Type: Stapled



OQ382

Model No.	Mfg. No.	Dimensions L" x W"	Cover Colour	Number of Pages	Price /Each
OQ358	371FX-M	4-5/8 x 3-1/4	Yellow	24	18.40
OQ379	971FX-M	4-5/8 x 3-1/4	Green	24	18.40
OQ380	971TFX-M	4-5/8 x 3-1/4	Tan	24	18.40
OQ381	771FX-M	4-5/8 x 3-1/4	Black	24	18.40
OQ359	371FX	7 x 4-5/8	Yellow	48	29.50
OQ382	971FX	7 x 4-5/8	Green	48	29.50
OQ383	971TFX	7 x 4-5/8	Tan	48	29.50
OQ384	771FX	7 x 4-5/8	Black	48	29.50

## RITE IN THE RAIN® MEMO NOTEBOOK

- Notebook will resist sweat, rain, mud, snow, oil, grease and the wear-and-tear of daily use
- Field-Flex cover material allows for utmost notebook flexibility
- Page edges rounded in corners and are flush with cover
- Paper tough enough to withstand the harshest and wettest conditions yet can be torn like heavy paper
- Cover Material: Soft Cover
- Number of Pages: 112
- Binding Type: Perfect
- Dimensions: 3-1/2" W x 5" L

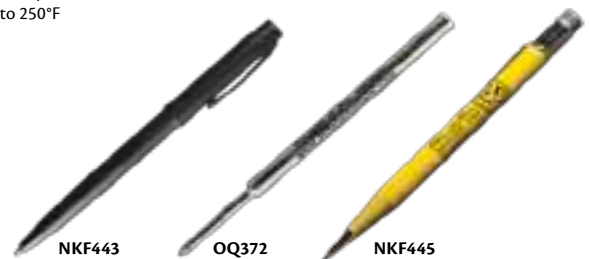


NKF442

Model No.	Mfg. No.	Cover Colour	Price /Each
NKF442	374-M	Yellow	10.90
OQ416	954	Green	10.90
OQ417	954T	Tan	10.90
OQ418	754	Black	10.90

## RITE IN THE RAIN® ALL-WEATHER PENS AND PENCILS

- Performs in temperatures from -30°F to 250°F



NKF443

OQ372

NKF445

Model No.	Mfg. No.	Type	Ink Colour	Point Size mm	Price /Each
NKF443	97	Pen	Black	0.8	31.30
OQ355	37R	Pen Refill	Black	0.8	12.60
OQ371	97B	Pen	Blue	0.8	31.30
OQ372	47R	Pen Refill	Blue	0.8	12.60
NKF445	YE99	Mechanical Pencil	-	-	23.60

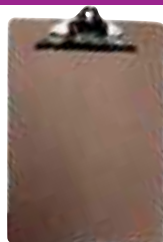


# OFFICE SUPPLIES & EQUIPMENT

## CLIPBOARDS

Masonite clipboard available for letter or legal size.

OF245



Model No.	Description	Price /Each
OF245	9" x 12" Letter Size	3.77
OF246	9" x 15" Legal Size	3.92

## SHEET HOLDERS

- Side hinged form holder with steel clamp
- Closes like a box to protect your documents
- Storage compartment on the side
- 30-sheet capacity
- Aluminum
- Letter size

Model No. OE210  
Price/Each \$57.90



## SHEET PROTECTORS

- Copysafe™ top loading sheet protectors feature a reinforced 3 hole ring edge
- Holds 8 1/2" x 11" in non-glare polypropylene
- Heavy weight, 100/pkg.

Model No. OC376  
Price/Each \$23.10



## VINYL BINDERS

- Round "No Gap" rings prevent gapping and misalignment
- Two inside pockets with pocket guard to secure documents
- Label holder on spine
- Letter size



Size"	Black	Blue	Green	Red	Grey	Price/Each
1	OT077	VEN052	OT080	OB780	OT079	5.82
2	OT091	OT092	OT094	OT096	OT093	11.00
3	OT101	OT103	OJ986	OT102	-	16.00

## EXPANDING FILES

- Red fibre
- Elastic cord closing flap
- Without compartments



Model No.	Document Size	Expansion Size	Price/Each
OJ870	Letter	3 1/2"	4.27
OJ868	Legal	3 1/2"	5.44
OJ874	Letter	5 1/4"	5.95
OJ872	Legal	5 1/4"	6.59

## WHITE PAPER PADS

- 96 sheets per pad
- Five pads per package



Model No.	Size	Price/Pack
OTF720	Letter, Ruled 5/16"	13.90
OTF719	Letter, Ruled 1/4"	12.50
OK913	Legal, Ruled 5/16"	24.70
OK920	Letter, Quadruled, 4 sq./in.	14.80
OK919	Legal, Quadruled, 4 sq./in.	28.40

## MULTI PURPOSE COPY PAPER

For everyday use on all black and white equipment using plain paper. Recommended for copiers, plain paper faxes and laser printers. Acid free for long life. 20 lbs., 92 bright. 500/Pkg.



Model No.	Dimensions	Colour	Price/Each
OA316	Letter 8 1/2" W x 11" L	White	6.64
OC219	Legal 8 1/2" W x 14" L	White	9.15

## EARTHCHOICE® OFFICE PAPER

- Multi purpose copy paper
- Made with strict environmental concerns
- 92 bright
- 500 sheets/pack
- 20 lbs.
- FSC certified and endorsed by the Rainforest Alliance



Model No.	Dimensions	Colour	Price/Each
OJ956	Letter 8 1/2" W x 11" L	White	7.29
OJ957	Legal 8 1/2" W x 14" L	White	8.90

## FILE FOLDERS

- Other colours available



Priced per Box of 100

Description	Model No. Letter	Price /Box	Model No. Legal	Price /Box
<b>1/2 CUT REVERSIBLE</b>				
9 1/2 pt Manila	OB762	28.20	OB761	35.50
9 1/2 pt Ivory	OB763	24.90	OB764	33.90
10 1/2 pt Ivory	OB765	30.00	OB766	36.30
<b>STRAIGHT CUT</b>				
9 1/2 pt Manila	OTD040	31.10	OTD243	38.50
10 1/2 pt Ivory	OTD056	28.70	OTD258	35.90

## SELF-STICK NOTES

- Removable self stick notes adhere to almost any surface
- 100 sheets/pad
- Colour: Yellow
- 12 pads/package



Model No.	Dimensions	Price /Pack
OC140	3" x 3"	5.07
OC141	1-1/2" x 2"	3.06

## RECYCLED POST-IT® SELF-ADHESIVE NOTEPADS

- 100% recycled content
- 55-95% post-consumer waste
- Pads of 100 sheets
- Available in yellow or sun washed pier colours

Model No	Description	Price /Pack
<b>16 PADS/ PACKAGE</b>		
OK994	3" x 3"- Yellow	41.20
OK993	3" x 3"- Sun-Washed Pier	43.80
OK996	3" x 5"- Yellow	60.40
OK995	3" x 5"- Sun-Washed Pier	61.20
<b>24 PADS/ PACKAGE</b>		
OK992	1 1/2" x 2"- Yellow	28.40
OK991	1 1/2" x 2"- Sun-Washed Pier	30.60





## HEAVY-DUTY 390 STAPLERS

- Ideal for large stapling jobs
- Features a front-end jam clearing mechanism and a precision staple alignment
- Adjustable 2-5/8" throat depth
- Uses Swingline® S.F-13 heavy-duty 1/4", 1/2", 3/8" and 3/4" staples
- Sheet Capacity: 0 - 160
- Staple Capacity: 210
- Dimensions: 13.75" D x 6.75" W x 3.188" H
- Material: Metal
- Manufacturer's Warranty: Limited Lifetime

Model No.	Description	Price /Each
OTK962	Black & Grey	96.70
<b>STAPLES</b>		
OTK949	1000/box - 1/4"	8.30
OTK950	1000/box - 3/8"	9.77
OTK948	1000/box - 1/2"	11.70
OTK951	1000/box - 3/4"	15.20



Swingline®

## DURABLE 646 DESK STAPLER

- Uses standard staples
  - Colour: Black
  - 15-sheet capacity; 210-staple capacity
  - Antimicrobial protection
  - Manufacturer's Warranty: Limited Lifetime
- Model No. OTK977**  
**Price/Each \$28.30**



Swingline®

## 747 BUSINESS STAPLER

- Uses standard staples
  - Colour: Chrome
  - 25-sheet capacity; 210-staple capacity
  - Manufacturer's Warranty: Limited Lifetime
- Model No. OJ620**  
**Price/Each \$42.50**



## STANDARD STAPLES

- 5000/box
- Model No. OTK946**  
**Price/Each \$3.01**



## E-Z GRIP™ STAPLERS, 1/2 STRIP

- Offers comfortable stapling with a soft-feel, non-slip grip and ergonomic design
- Versatile design stands up for handheld stapling or lies flat for desktop use
- Rotating anvil - Staples or tacks
- 15-sheet capacity
- Colour: Black
- Limited 1-year warranty
- Holds a half strip of staples

**Model No. OM181**  
**Price/Each \$10.20**

Swingline®



## OPTIMA® GRIP ELECTRIC STAPLERS

- A compact automatic stapler that you control
- Jam free stapling of up to 20 sheets with Swingline® Optima® premium staples
- Built-in stack height gauge and staple placement guides
- Convenient plug-in or battery operation
- Limited 2-year warranty

**Model No. OM175**  
**Price/Each \$97.60**

**REPLACEMENT STAPLES - 3750/BOX 1/4"**  
**Model No. OM192**  
**Price/Box \$10.50**



Swingline®

## OPTIMA® 25 STAPLER

- Reduced effort design allows you to staple more sheets with less effort
- Features a low staple indicator
- Dimensions: 3.125" D x 7.125" W x 1.875" H
- Sheet Capacity: 0 - 25
- Staple Capacity: 210
- Colour: Grey and Orange
- Manufacturer's Warranty: Limited Lifetime

**Model No. OP857**  
**Price/Each \$29.70**

**REPLACEMENT STAPLES - 3750/BOX 3/8"**  
**Model No. OP861**  
**Price/Box \$8.50**



Swingline®

## OPTIMA® 25 COMPACT STAPLER

- Compact size is ideal for smaller desktops, work areas, offices and classrooms
- Features a low staple indicator on the side
- Dimensions: 5.25" L x 1.875" W x 2.94" H
- Sheet Capacity: 0 - 25
- Staple Capacity: 105
- Colour: Grey and Orange

**Model No. OP825**  
**Price/Each \$23.80**

**REPLACEMENT STAPLES - 3750/BOX 1/4"**  
**Model No. OP861**  
**Price/Box \$8.50**



Swingline®

## QUICK TOUCH™ STAPLER

- Offers a boost of power for effortless stapling
- Ergonomic design
- Metal construction delivers lasting durability
- Sheet Capacity: 0 - 28
- Dimensions: 7.539" L x 1.614" W x 3.169" H
- Colour: Black and Silver
- Manufacturer's Warranty Limited 5 Year

**Model No. OP826**  
**Price/Each \$39.60**

**REPLACEMENT STAPLES - 3750/BOX 3/8"**  
**Model No. OP861**  
**Price/Box \$8.50**



Swingline®

## OPTIMA® 40 COMPACT STAPLER

- Durable metal construction ensures long lasting use
- Dimensions: 5.125" L x 3.184" W x 1.563" H
- Sheet Capacity: 0 - 40
- Staple Capacity: 105
- Colour: Black and Silver
- Manufacturer's Warranty: Limited Lifetime

**Model No. OP823**  
**Price/Each \$30.30**

**REPLACEMENT STAPLES - 3750/BOX 1/4"**  
**Model No. OM192**  
**Price/Box \$10.50**



Swingline®

## OPTIMA® 70 STAPLER

- Ergonomic design
- Features the QuickLoad™ button for fast staple refill
- Dimensions: 10.1" D x 2.5" W x 6.15" H
- Sheet Capacity: 0 - 70
- Staple Capacity: 210
- Colour: Black and Silver
- Manufacturer's Warranty: Limited Lifetime

**Model No. OP858**  
**Price/Each \$70.60**

**REPLACEMENT STAPLES - 2500/BOX 3/8"**  
**Model No. OP859**  
**Price/Box \$12.00**



Swingline®

## STAPLE REMOVERS

- Jaw Type
- Model No. OC201**  
**Price/Each \$1.59**



**ROTEX®**

# OFFICE SUPPLIES & EQUIPMENT

## STACK-AND-SHRED™ SHREDDER

- Auto feed shredder can shred up to 130 sheets at a time
- Slice through paper clips and staples
- Auto power feature
- Colour: Black
- Dimensions: 14" L x 12" W x 17" H
- 7 gallon waste bin included



**GBC**

Model No.	Price /Each
OP834	470.00

## MICRO-CUT SHREDDER

- Auto feed shredder can shred up to 9 sheets at a time
- Features a separate slot for CD/DVD shredding
- Slice through paper clips and staples
- Colour: Black
- Dimensions: 14" L x 14-1/2" W x 18-7/10" H
- 6 gallon waste bin included



**GBC**

Model No.	Price /Each
OP835	298.00

## GS5 PERSONAL SHREDDERS

- Strip cut personal shredder intended for one user
- Shreds 7.4 feet per minute
- Auto start/stop and reverse
- 70 dB
- 12.50" W x 12.75" D x 13.50" H
- Not intended for CDs



**Swingline**

Model No.	Cut Style	Shredding Capacity	Capacity	Price /Each
OM980	Straight cut 1/4"	5 sheets	2.6 gal.	55.70

## SX19-09 CROSS CUT SMALL OFFICE SHREDDERS

- Cut Size: 4 x 40 mm
- Security Level: P-4
- Noise Level: < 60 dB
- Jam-free technology with continuous sensing
- Shreds CDs/DVDs, credit cards, staples and paper clips
- Automatically shuts down when bin is opened
- Colour: Black



**GBC**

Model No.	Cut Style	Shredding Capacity	Capacity	Price /Each
OP297	Cross	19 sheets	9 gal.	597.00

## SM12-08 MICRO CUT SMALL OFFICE SHREDDERS

- Jam-free technology prevents paper jams before excess paper is caught in cutters
- Self clean cutters reduce buildup of shreds
- Quiet operation
- Shreds paperclips and staples
- Auto-shutdown conserves energy
- Colour: Black



**GBC**

Model No.	Cut Style	Shredding Capacity	Capacity	Price /Each
OP298	Micro	12 sheets	8 gal.	765.00

## GX5 PERSONAL SHREDDERS

- Crossed cut 0.16" x 1.18"
- Shreds 8.5 feet per minute
- Auto start/stop and reverse
- 70 dB
- 13.80" W x 14.70" D x 15.38" H
- Not intended for CDs



**Swingline**

Model No.	Cut Style	Shredding Capacity	Capacity	Price /Each
OM981	Cross	5 sheets	3.7 gal.	91.80

## SHREDDER OIL

- Helps maintain cross-cut shredders running at capacity
- Container Size: 473 ml (16 oz.)
- Compatible with all shredder models regardless of the manufacturer



**GBC**

Model No.	Price /Each
OP836	33.50

## CLASSICUT® TRIMMER

- Features a self-sharpening steel blade and a blade shield for safety
- Trim paper, presentations, flyers, large projects and office documents
- Cut Length: 14"
- Sheet Capacity: 40
- Base Dimensions: 17.5" L x 10.5" W



**Swingline**

Model No.	Price /Each
OP829	436.00

## REFRIGERATOR

- Large capacity is great for shared use in larger offices and businesses
- Features a reversible door, interior light, and adjustable thermostat
- Recessed handle and adjustable feet
- Includes 2 glass shelves in fridge and 1 in freezer
- Energy Star certified
- Capacity Cu. Ft.: 7.6 cu. ft.
- Overall Height: 55-1/2"
- Overall Width: 21-1/2"
- Overall Depth: 22-1/2"
- Manufacturer Warranty: 18 Months



## COMPACT REFRIGERATOR

- Compact size fits on or under the counter top
- Features a reversible door, adjustable glass shelves, bottle rack and ice box with tray
- Ideal for homes and offices
- 100% HFC Fee
- Safety Certification: cETL
- Capacity Cu. Ft.: 2.6 cu. ft.
- Overall Dimensions: 17-1/2 W" x 19-3/10 D" x 25 H"
- Shelves included: 2
- Colour: White
- Warranty: 18 months

**Model No. OP814**  
**Mfg. No. RMF-70W**  
**Price/Each \$306.00**



Model No.	Colour	Price /Each
0Q717	Stainless Steel	723.00

## COMPACT REFRIGERATORS

- Compact refrigerator features reversible door, adjustable glass shelves, bottle rack and separate ice box
- Ideal for homes and offices
- 100% HFC Fee
- Safety Certification: cETL
- Shelves included: 3
- Capacity Cu. Ft.: 4 cu. ft.
- Overall dimensions: 18-19/20 W" x 22-4/5 D" x 33-2/5 H"
- Warranty: 18 months

OP817



OP816



Model No.	Colour	Price /Each
OP816	Black	345.00
OP817	Steel	353.00



**MATRIX<sup>®</sup>**  
INDUSTRIAL PRODUCTS

**Maintain the ideal temperature in your workplace.**









# CAFETERIA SUPPLIES & EQUIPMENT

## BEVERAGE & WINE COOLER

- Holds 110 cans and 4 bottles
- Tempered glass shelves with three adjustable glass shelves
- Chrome wire shelf for wine or sparkling water bottles
- Electronic temperature control and display with lockout feature
- Interior blue LED to showcase beverages
- Capacity Cu. Ft.: 4.5 cu. ft.
- Overall dimensions:  
20-2/5 W" x 21-2/5 D" x 31-2/5 H"



Model No.	Colour	Price /Each
Q0864	Black/Stainless Steel	466.00

## BEVERAGE & BREAKFAST BAR COOLER

- Small enough for tabletop or countertop use
- Features a tempered glass door and two adjustable wire shelves
- Ideal for home bars, dorms, personal offices, small workplaces or hospitality use
- Capacity Cu. Ft.: 1.6 cu. ft.
- Overall dimensions:  
17-1/2 W" x 18-1/3 D" x 19-1/2 H"



Model No.	Colour	Price /Each
Q0863	Black/Stainless Steel	311.00

## HIGH DENSITY ICE CUBE MAKER

- Makes clear, restaurant quality, high-density ice cubes that melt 5 times slower than standard ice
- Hooks up to water supply for continuous ice-making
- Ideal for workplace break rooms, cafeterias, and small food service establishments
- Makes 13 kg of ice per 24 hours, or approximately 24 cubes every 15-30 minute cycle
- Touch pad controls and LED display with on/off and ice full indicators
- Features commercial grade ice making technology that uses waterfall effect to slowly make clear, dense ice versus static, quick freezing water that oxidizes and creates cloudy ice



Model No.	Unit Dimensions W" x D" x H"	Price /Each
PUL894	11.3 x 14.8 x 14.1	363.00

## AQUARIUS POU COUNTERTOP WATER DISPENSER

- Hot, cold and room-temperature water from a single dispense point
- Polymer casing won't rust or scratch countertop
- POU countertop can connect to a filtration system
- Two options for dispensing - choose from 3 pre-select cup sizes or any size
- 17" height to enable fit under kitchen cabinets
- Extra high 11" dispense height makes it easy to fill large bottles
- Commercial cooling capacity; compressor-driven refrigeration system
- Removable drip tray
- Certified to NSF/ANSI 372 for low lead content
- Energy Star certified
- UL Listed
- 3 year limited warranty
- Capacity: 0-0.3 gal.
- Height: 17"
- Width: 13-1/4"
- Depth: 14-1/2"
- Weight: 30 lbs.



Model No.	Mfg. No.	Price /Each
Q0845	POU1ACTH5K	790.00

## Industrial Multi-Purpose Cleaning Products





## 1000W COMMERCIAL MICROWAVE

- Capacity Cu. Ft.: 0.9 cu. ft.
- Door Style: Pull Handle
- Features 3 power levels and 10 programmable settings
- Ceramic bottom for a durability and easy cleaning
- 1-touch keypad
- Bright backlit LCD display
- Colour: Silver/Stainless Steel
- Overall dimensions: 20-1/2 W" x 18 D" x 12-1/5 H"
- Warranty: 12 months

**Model No. OP521**  
**Price/Each \$478.00**



## 900W MICROWAVE OVEN

- Compact Size
- Capacity Cu. Ft.: 0.9 cu. ft.
- Includes 10 power levels and 6 automatic cooking menus
- Door style: Push Button
- Overall dimensions: 19 W" x 14-1/10 D" x 11-1/0 H"
- Colour: White
- Warranty: 1 year

**Model No. OP813**  
**Price/Each \$174.00**



## 1000W MICROWAVE OVEN

- Capacity Cu. Ft.: 1.34 cu. ft.
- Door Style: Push Button
- Includes 10 power levels and 6 automatic cooking menus
- Overall dimensions: 21-4/5 W" x 17-9/10 D" x 12-1/5 H"
- Colour: Silver/Stainless Steel

**Model No. OP453**  
**Price/Each \$287.00**



## 1000W MICROWAVE OVEN

- Capacity Cu. Ft.: 1.1 cu. ft.
- Door Style: Push Button
- Includes 10 power levels and 6 automatic cooking menus
- Overall dimensions: 21-1/5 W" x 15-9/10 D" x 11-4/5 H"
- Colour: Black/Stainless Steel
- Includes a 18 month warranty

**Model No. OP452**  
**Price/Each \$204.00**



## FREE-STANDING WATER DISPENSER

- Ideal for office break-rooms, reception, and meeting rooms
- Use standard 3 and 5 gallon water bottles
- Dispenses both hot and cold water
- Convenient storage compartment for cups
- Safety lock for hot water
- Provides steaming hot water within 4 minutes
- Water bottle not included
- Style: Floor
- Cold Water Dispensing Capacity: 3.2 L
- Hot Water Dispensing Capacity: 1 L
- Minimum Hot Water Temperature: 50°C
- Warranty: 12 months



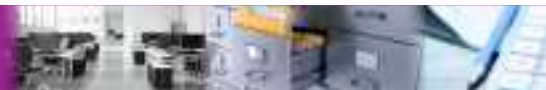
Model No.	W"	x	Dimensions L"	x	H"	Colour	Price /Each
0Q641	10-1/5	x	13	x	39-4/5	White	259.00

## COUNTERTOP WATER DISPENSER

- Ideal for office break-rooms, reception, and meeting rooms
- Use standard 3 and 5 gallon water bottles
- Dispenses both hot and cold water
- Convenient storage compartment for cups
- Safety lock for hot water
- Provides steaming hot water within 4 minutes
- Water bottle not included
- Style: Counter Top
- Cold Water Dispensing Capacity: 1 L
- Hot Water Dispensing Capacity: 0.8 L
- Minimum Hot Water Temperature: 50°C
- Warranty: 12 months



Model No.	W"	x	Dimensions L"	x	H"	Colour	Price /Each
0Q640	10-4/5	x	11-7/10	x	15-3/5	White	113.00



## OASIS® WATER COOLERS

Oasis® water coolers are manufactured with a heavy gauge steel frame which provides durable and quiet operation. They feature a 5-year limited warranty on the sealed refrigeration system and most component parts. All waterways are constructed of lead free materials and HFC 134A is used as a refrigerant. No CFCs are used. All units are standard tan sandstone finish. Drinking water temperature is 50°F/10°C. Certified for sale in Canada by an accredited certification body.



### WALL-MOUNTED COOLERS

These units come in standard or compact models. All units are shipped with complete instructions and wall mounting brackets. Units should be installed with the nozzle 36 inches from the floor.

Model No.	Mfg. No.	Description	GPH Capacity	W"	Dimensions			H"	Wt. lbs.	Price /Each
					x	D"	x			
OJ952	PLF4CM	Compact	4	17	x	13 3/16	x	16	51	1645.00
OA061	P8M	Standard	8	17	x	29 7/8	x	14	73	1608.00
OA536	P14M	Standard	14	17	x	29 7/8	x	14	76	2466.00



OA061



OA063

### FREE-STANDING COOLERS

#### COMPACT FREE-STANDING

Attractive economical line suitable for applications in offices, shops or factories where space saving is critical.

Model No.	Mfg. No.	Description	GPH Capacity	W"	Dimensions			H"	Wt. lbs.	Price /Each
					x	D"	x			
OA063	P3CP	Compact	3	12	x	12	x	43 3/4	66	1376.00
OA064	P5CP	Compact	5	12	x	12	x	43 3/4	69	1422.00
OA548	P10CP	Compact	10	12	x	12	x	43 3/4	73	1549.00



OC709

#### AGAINST-A-WALL OR FREE-STANDING COOLERS

All plumbing connections are completely sealed within the cabinet, permitting flush-to-wall installation.

Model No.	Mfg. No.	Description	GPH Capacity	W"	Dimensions			H"	Wt. lbs.	Price /Each
					x	D"	x			
OC709	P8FA	Standard	8	17	x	14	x	43 3/4	94	1665.00
OA550	P14FA	Standard	14	17	x	14	x	43 3/4	96	2460.00

### BARRIER FREE WHEELCHAIR COOLERS

- Designed specifically for easy access
- Wheelchairs fit under edge of water basin for comfort and convenience
- Instructions and wall mounting brackets included
- Drinking water temperature is 50°F/10°C
- 17 1/2 W" x 18 1/2 D" x 22 11/32 H"



Model No.	Mfg. No.	Bubbler Valve Type	GPH Cap.	Price /Each
OA059	PG8AC	3 Electric Push Bars	7.8	1109.00



OA059

## DRINKING WATER FILTERS FOR OASIS® COOLERS

- Removes dirt, cloudiness, particles, unpleasant odours and taste
- Reduces chlorine by 97%, lead between 95.9% and 99% and cryptosporidium and giardia cysts by 99.99%
- Works with all the Oasis® water coolers listed on this page
- Includes brackets, complete filter and colour coded waterline connections
- Fast and easy-to-change refill cartridges with automatic shut-off valve inside the filter
- Designed to last 1500 gallons or approximately six months



Model No.	Description	Price /Each
OG445	Filter	345.00
OG446	Refill Cartridge	176.00



OG445

## VERSAFILLER™ WATER FOUNTAIN & BOTTLE FILLERS

Enjoy the best of both water options; refreshing fountain water and a bottle filler unit for refillable bottles. The VersaFiller™ accomplishes both tasks with ease and simplicity, and puts your location at the top of the refillable bottle trend while making a bold statement about your concern for the environment.

The VersaFiller™ is also designed for the future. The alcove and activation button contain Freshield™, which utilizes a silver-based antimicrobial compound. This is ideal for work-place settings, schools, university locations, and any public building.

The VersaFiller™ unit is available in two configurations. The **ON557** (PWSBF) model can be retrofitted to existing **OA059** (P8AC) coolers as well as ElKay's EZ8 models (some installation is required to connect this unit to existing P8AC models) providing an instant upgrade to those products already in the field.

The **ON557** (PWSBF) is also designed for simplicity of installation, requiring only water tubing connection to the host (P8), with no required electrical connections or separate drains.

The VersaFiller™ can be purchased as a complete top and bottom combination as well, **ON555** or **ON556**.

### STANDARD FEATURES:

- Waterways are lead-free in materials and construction
- Heavy-duty galvanized steel frame bolts directly to the wall
- Freshield™ antimicrobial compound
- Gauges: Panels: 22, frame: 16
- ADA compliant for adult or child when properly installed
- Certified to NSF/ANSI Standard 61, Annex G (AB1953)
- 5-year limited warranty



ON556

Model No.	Mfg. No.	Description	Capacity GPH	W"	x	D"	x	H"	Weight lbs.	Price /Each
ON555	PG8SBF	VersaFiller™ Combo Complete w/OA059, Sandstone Finish	8	24	x	36	x	24	74	1939.00
ON556	PG8SBF	VersaFiller™ Combo Complete w/OA059, Stainless Finish	8	24	x	36	x	24	74	2037.00
ON557	N/A	VersaFiller™ Retrofit Kit for OA059, Fountain Only (See page 1636 for OA059)	N/A	6	x	18	x	12	10	882.00

## REPLACEMENT FILTER CARTRIDGES

**Single Action (Dirt/Rust)** - hot and cold water filters are made of pure white cellulose fibres. 1" centre hole.

**Double Action (Taste/Odour, Dirt/Rust)** - cold water only filter made of pure white cellulose fibres with activated carbon granules. For normal contamination. 1" centre hole.

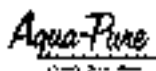
**Double Action (Scale, Dirt/Rust)** - uses annular grooves and the graded density cellulose of the Dirt/Rust cartridges plus a compound to inhibit scale. Extends the life of pipes, fixtures and appliances. Cold water only. 1" centre hole.



Model No.	Filter Type	Maximum Temperature	Flow/Rate/ Cartridge (GPM)	Dim H"	x	Dia"	Rating Microns	Price /Each
<b>NORMAL FILTRATION</b>								
BA590	Single (Dirt/Rust)	210°F (99°C)	6	9 3/4	x	2 5/8	5	17.00
BA592	Double (Taste/Odour, Dirt/Rust)	100°F (38°C)	3	9 3/4	x	3	5	29.10
BA593	Double (Scale, Dirt/Rust)	100°F (38°C)	8	9 3/4	x	2 15/16	5	122.00
<b>HEAVY FILTRATION</b>								
BA591	Single (Dirt/Rust)	210°F (99°C)	6	9 3/4	x	2 5/8	50	14.80

## ICE MAKER WATER FILTERS

- Triple action filtration provides sparkling clear ice cubes, fresh tasting water, coffee and beverages
- Protects equipment from scale and corrosion, reducing maintenance costs
- Effective taste, odor, chlorine removal
- Filters particulates as small as 5 microns
- 1/4" NPT connections, 1/2 GPM flow rate maximum



Model No.	Dimensions H" x Dia."	Max. Water Capacity	Max. Water Temperature	Pressure	Price /Each
BA609	8 3/8 x 2 1/4	1500 gal.	100°F (38°C)	125 PSI	65.40

## VERSAFLOW® WATER BOTTLE FILLER RETRO-FIT KIT

- Retrofits to ADA drinking fountains as far back as 1995
- Comes complete with certified 3000 gallon lead reduction filter that treats water for the bottle filler and the fountain
- Large 13" alcove fits most large sports bottles
- Single piece polymer cabinet won't rust or dent
- Mechanical activation button dispenses water during power outages
- Large anti-microbial copper activation button is easy to push and reduces transfer of pathogens
- Filter mounted within bottle filler for easy replacement
- ADA compliant bottle filler when retrofitted to PG8AC or P8AM per manufacturer's recommendation



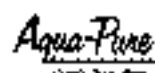
Model No.	Alcove Height"	Price /Each
OQ915	13	1225.00

## UNDER-SINK WATER FILTERS

- Compact 2 GPM cold water filter
- Filter included
- Maximum water temperature 100°F (38°C)
- 125 PSI
- Inlet/outlet size: 3/8" NPT



BA605



Model No.	Dimensions H" x Dia."	Filter Type	Filter	Wt. lbs.	Price /Each
BA605	8 13/16 x 4 7/8	Dirt/Rust/Taste/Odour	BA607	2 3/4	237.00

### REPLACEMENT FILTER CARTRIDGES

Model No.	Description	For Use with Housing	Price /Each
BA607	Taste/Odour, Dirt/Rust	BA605	61.71



# PLUMBING FIXTURES

## M-BITION® CENTRESET FAUCET

- Durable, quarter turn ceramic 1224 cartridge
- Vandal-resistant torque screw discourages tampering
- Handles feature hot and cold colour indicators
- Designed to be installed through two 1" minimum diameter holes (model **PUM076**: 4" on centre; model **PUM077**: 2" on centre)
- Drain not included
- Material: Chrome
- Type: Traditional
- Mount Location: Deck Mounted
- No. of Handles: 2
- Handle Type: Lever
- Handle Length: 4"
- Flow Rate: 1.2 GPM
- Connection Type: 1/2" IPS
- Certifications: CSA B125.1
- Manufacturer's Warranty: 5 Year Limited



## MOEN®

Model No.	Mfg. No.	Description	Installation Holes	Overall Height"	Aerator Height"	Price /Each
<b>PUM076</b>	8800	Lavatory	2	4-5/8	2.28	<b>168.00</b>
<b>PUM077</b>	8798	Kitchen	3	6-21/32	5.75	<b>204.00</b>

## M-BITION® CENTRESET FAUCET

- 1255° Duralast® ceramic cartridge designed to offer the smooth feel and reliable operation of a new faucet from the first time you use it to the last
- Vandal-resistant hex screw discourages tampering
- Brass construction, adjustable temperature limit-stops provide anti-scalding protection
- Drain not included
- Designed to be installed through three 1" diameter holes, 2" on centre
- Material: Chrome
- Type: Traditional
- Mount Location: Deck Mounted
- No. of Handles: 1
- Handle Type: Lever
- Flow Rate: 1.2 GPM
- Connection Type: 1/2" IPS
- Certifications: CSA B125.1
- Manufacturer's Warranty: 5 Year Limited
- Maximum Deck Thickness: 1-3/4"



## MOEN®

Model No.	Mfg. No.	Description	Installation Holes	Overall Height"	Aerator Height"	Price /Each
<b>PUM075</b>	8430	Lavatory	3	3	2	<b>141.00</b>

## M-DURA™ LAVATORY FAUCET

- Ceramic disc cartridge with temperature limit stop
- Solid cast brass construction
- Vandal-resistant hex screw discourages tampering
- Brass construction, adjustable temperature limit-stops provide anti-scalding protection
- Temperature controlled through 110° arc of handle
- Model **PUM080**: Designed to be installed through three 1" diameter holes
- Model **PUM079**: Designed to be installed through one 1-3/8" minimum diameter hole
- Material: Chrome
- Type: Traditional
- Mount Location: Deck Mounted
- No. of Handles: 1
- Handle Type: Lever
- Flow Rate: 2.2 GPM
- Connection Type: 1/2" IPS
- Certifications: CSA B125.1
- Manufacturer's Warranty: 5 Years Against Material or Manufacturing Defects
- Maximum Deck Thickness: 1-1/8"



## MOEN®

Model No.	Mfg. No.	Description	Installation Holes	Overall Height"	Aerator Height"	Price /Each
<b>PUM078</b>	8413	Centreset	3	6-5/8	2.5	<b>182.00</b>
<b>PUM079</b>	8417	Single Mount	1	6-3/4	2.5	<b>224.00</b>

## M-DURA™ CENTRESET FAUCET

- Heavy-duty, quarter turn ceramic disc cartridge with a durable brass shell features internal stops to prevent misalignment, ensuring complete shut-off every time
- Solid cast brass construction
- Vandal-resistant torque screw discourages tampering
- Handles feature hot and cold colour indicators
- Designed to be installed through two 1" minimum diameter holes, 4" centreset
- Material: Chrome
- Type: Traditional
- Mount Location: Deck Mounted
- Installation Holes: 2
- Overall Height: 4-1/2"
- No. of Handles: 2
- Handle Type: Lever
- Flow Rate: 2.2 GPM
- Connection Type: 1/2" IPS
- Certifications: CSA B125.1
- Manufacturer's Warranty: 5 Year Limited



## MOEN®

Model No.	Mfg. No.	Description	Installation Holes	Overall Height"	Aerator Height"	Price /Each
<b>PUM080</b>	8210	Lavatory	2	4-1/2	2	<b>175.00</b>
<b>PUM081</b>	8215	Lavatory	2	4-1/2	2.88	<b>191.00</b>

## M-DURA™ WIDESPREAD FAUCET

- Heavy-duty, quarter turn ceramic disc cartridge with a durable brass shell features internal stops to prevent misalignment, ensuring complete shut-off every time
- Solid cast brass construction
- Vandal-resistant torque screw discourages tampering
- Handles feature hot and cold indicators
- Designed to be installed through three 1-9/32" minimum diameter holes, 8" widespread
- Material: Chrome
- Type: Traditional
- Mount Location: Deck Mounted
- No. of Handles: 2
- Handle Type: Lever
- Flow Rate: 2.2 GPM
- Connection Type: 1/2" IPS
- Certifications: CSA B125.1
- Manufacturer's Warranty: 5 Year Limited



## MOEN®

Model No.	Mfg. No.	Description	Installation Holes	Overall Height"	Aerator Height"	Price /Each
<b>PUM082</b>	8220	Lavatory	3	4-3/16	2.88	<b>310.00</b>
<b>PUM083</b>	8228	Lavatory	3	4-3/4	2.88	<b>328.00</b>

## COMMERCIAL SINGLE MOUNT FAUCET

- 1255° Duralast® ceramic cartridge designed to offer the smooth feel and reliable operation of a new faucet from the first time you use it to the last
- Vandal-resistant hex screw discourages tampering
- Red and blue plastic temperature indicators on handle
- Temperature controlled by 100° arc of handle travel
- Designed to be installed through one 1-1/4" minimum diameter hole
- Material: Chrome
- Type: Traditional
- Mount Location: Deck Mounted
- No. of Handles: 1
- Handle Type: Lever
- Flow Rate: 1.2 GPM
- Connection Type: 3/8" Compression
- Certifications: CSA B125.1
- Manufacturer's Warranty: 5 Year Limited



## MOEN®

Model No.	Mfg. No.	Description	Installation Holes	Overall Height"	Aerator Height"	Price /Each
<b>PUM085</b>	9480	Lavatory	1	6-1/8	2.54	<b>173.00</b>

## M-DURA™ CENTRESET BAR & PANTRY FAUCET

- Heavy-duty, quarter turn ceramic disc cartridge with a durable brass shell features internal stops to prevent misalignment, ensuring complete shut-off every time
- Solid cast brass construction
- Vandal-resistant torque screw discourages tampering
- Handles feature hot and cold colour indicators
- Designed to be installed through two 1" minimum diameter holes
- Material: Chrome
- Handle Type: Lever
- Mount Location: Deck Mounted
- Installation Holes: 2
- Overall Height: 9-1/2"
- No. of Handles: 2
- Flow Rate: 1.2 GPM
- Connection Type: 1/2" IPS



Model No.	Mfg. No.	Installation Holes	Overall Height"	Aerator Height"	Spout Reach"	Price /Each
PUM086	8270	2	9-1/2	6.25	3-5/8	230.00
PUM088	8279	2	9-1/2	6.25	5-1/4	242.00

## M-DURA™ KITCHEN FAUCET

- 1255° Duralast® ceramic cartridge designed to offer the smooth feel and reliable operation of a new faucet from the first time you use it to the last
- Solid cast brass construction
- Vandal-resistant hex screw discourages tampering
- Pull-on/push-off handle
- Designed to be installed through one or three 1-3/8" minimum diameter holes
- Type: Traditional
- Material: Chrome
- Mount Location: Deck Mounted
- No. of Handles: 1
- Handle Type: Lever
- Flow Rate: 1.5 GPM
- Connection Type: 3/8" Compression x 24" Braided Polymer Supply Lines
- Certifications: CSA B125.1
- Manufacturer's Warranty: 5 Year Limited



Model No.	Mfg. No.	Installation Holes	Overall Height"	Aerator Height"	Spout Reach"	Price /Each
PUM093	8701	Multiple	5-1/2	5	9	195.00

## M-POWER™ ELECTRONIC FLUSH VALVE

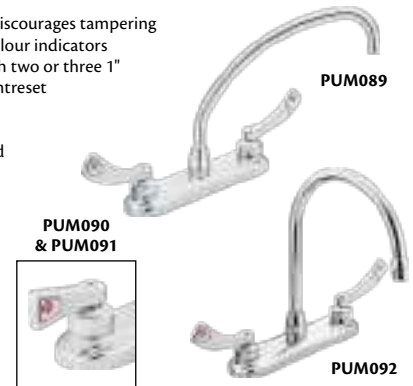
- Sensor-activated, exposed water closet flushometer with brass angle stop valve
- Chloramine resistant seals
- AccuSet™ piston technology delivers virtually maintenance-free precise flush volume, with a stainless steel self-cleaning filter to protect against clogs or damage
- Mechanical override
- Intended for use with floor mounted or wall hung top spud bowls with matching flow rates as specified by the fixture manufacturer
- Toilet flush valves: Adjustable infrared sensor range from 17" to 36"
- Urinal flush valves: Adjustable infrared sensor range up to 15"
- Battery-powered models include 4 AA alkaline batteries
- AC connection models requires 12 V transformer (sold separately)
- Finish: Chrome
- Operating Pressure Range: 15 - 120 PSI
- Manufacturer's Warranty: 5 Year Limited



Model No.	Mfg. No.	Description	Stop Inlet Connection"	Top Spud"	GPF	Price /Each
<b>BATTERY-POWERED</b>						
PUM120	8310	Toilet Flush Valve	1" IPS	1-1/2	1.6	665.00
PUM122	8312	Urinal Flush Valve	3/4" IPS	3/4	1	665.00
<b>AC CONNECTION</b>						
PUM121	8310AC16	Toilet Flush Valve	1" IPS	1-1/2	1.6	665.00
PUM123	8312AC10	Urinal Flush Valve	3/4" IPS	3/4	1	665.00

## M-DURA™ CENTRESET KITCHEN FAUCET

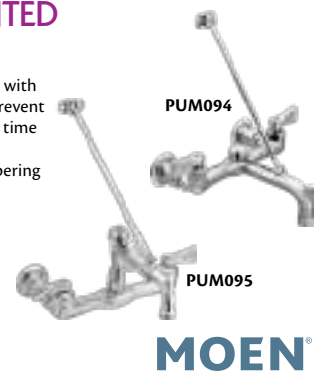
- Heavy-duty, quarter turn ceramic disc cartridge with a durable brass shell features internal stops to prevent misalignment, ensuring complete shut-off every time
- Solid cast brass construction
- Vandal-resistant torque screw discourages tampering
- Handles feature hot and cold colour indicators
- Designed to be installed through two or three 1" minimum diameter holes, 8" centreset
- Type: Traditional
- Material: Chrome
- Mount Location: Deck Mounted
- Overall Height: 12"
- No. of Handles: 2
- Handle Type: Lever
- Flow Rate: 1.5 GPM
- Connection Type: 1/2" IPS
- Certifications: CSA B125.1
- Manufacturer's Warranty: 5 Year Limited



Model No.	Mfg. No.	Installation Holes	Overall Height"	Aerator Height"	Spout Reach"	Price /Each
PUM089	8282	Multiple	9-3/4	7.2	9-1/2	266.00
PUM090	8283	Multiple	9-3/4	7.2	9-1/2	246.00
PUM091	8287	Multiple	12	7.2	8	259.00
PUM092	8289	Multiple	12	7.2	8-1/2	280.00

## M-DURA™ WALL-MOUNTED SERVICE SINK FAUCET

- Heavy-duty, quarter turn ceramic disc cartridge with a durable brass shell features internal stops to prevent misalignment, ensuring complete shut-off every time
- Solid cast brass construction
- Vandal-resistant torque screw discourages tampering
- Handles feature hot and cold colour indicators
- Includes wall-mounting bracket
- Convenient pail hook
- Material: Chrome
- Type: Traditional
- Handle Type: Lever
- No. of Handles: 2
- Connection Type: 1/2" Eccentric IPS
- Finish: Rough Chrome



Model No.	Mfg. No.	Spout Type	Overall Height"	Aerator Height"	Spout Reach"	Price /Each
PUM094	8230	3/4" Garden Hose Thread	9-1/2	0.01	5-7/8	200.00
PUM095	8124	Vacuum-Breaker Garden Hose Thread	14	0.01	5-7/8	313.00

## M-PRESS™ METERING LAVATORY FAUCET

- Pressure-independent design features sealed silicone timing mechanism
- Vandal-resistant hex screw discourages tampering
- Solid brass construction
- Designed to be installed through two 1" minimum diameter holes, 4" centreset
- Single hole mount designed to deliver either tempered or ambient water
- Cycle time easily adjusted from 5 to 60 seconds, independent from water pressure
- Factory preset to automatically shut off after 10 seconds
- Material: Chrome
- Supply Line Pressure Range: 20 - 125 PSI
- Flow Rate: 0.5 GPM
- Connection Type: 1/2" IPS
- Manufacturer's Warranty: 5 Year Limited
- Certifications: CSA B125.1



Model No.	Mfg. No.	No. of Handles	Installation Holes	Overall Height"	Aerator Height"	Price /Each
PUM097	8886	2	2	3-1/2	2.8	329.00
PUM098	8894	1	1	3-3/4	2	220.00
PUM100	99551		4" Commercial Deck Plate for PUM098			29.70

# PLUMBING FIXTURES

## PFIRST SERIES COMPLETE ROMAN TUB TRIM

- Pforever Seal™ – advanced ceramic disc valve technology with a never leak guarantee
- High arc spout for added clearance
- Spout and handles included
- Mount Location: Deck Mounted
- Installation Holes: 3
- Overall Depth: 6"
- No. of Handles: 2
- Overall Height: 5-15/32"
- GPM Flow Rate: 18
- Deck to Aerator: 4-3/8"



PUL970

Model No.	Mfg. No.	Material	Price /Each
PUL969	1T65100	Polished Chrome	111.00
PUL970	1T6510K	Brushed Nickel	167.00
PUL971	1T6510Y	Tuscan Bronze	212.00

## PFIRST SERIES TUB ONLY TRIM

- Includes: Shower faucet trim, Bathtub faucet
- Valve body sold separately
- No. of Handles: 1
- Handle Type: Lever



Pfister.

Model No.	Mfg. No.	Material	Price /Each
PUM035	R890100	Polished Chrome	39.60

## PFIRST SERIES TUB & SHOWER TRIM

- Invigorating spray function helps relieve tension
- Hot/cold indicator on trim
- Quick trim wall flange eliminates exposed screws and cuts installation time by 50%
- Quick connect allows easy installation of the tub spout by slipping the adapter over a copper pipe and securing with a set screw
- No. of Handles: 1
- GPM Flow Rate: 1.8
- Showerhead Type: Bell
- Tub/Shower Diverter Type: Push/Pull
- Showerhead Diameter: 2-13/32"



PUM034

Pfister.

Model No.	Mfg. No.	Material	Price /Each
PUM032	LG890300	Polished Chrome	44.00
PUM033	LG89030K	Brushed Nickel	88.90
PUM034	LG89030Y	Tuscan Bronze	155.00

## PFIRST MODERN TUB ONLY TRIM

- Valve body sold separately
- No. of Handles: 1
- Handle Type: Lever



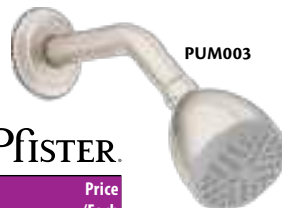
PUM036

Pfister.

Model No.	Mfg. No.	Material	Price /Each
PUM036	R890400	Polished Chrome	46.70
PUM037	R89040K	Brushed Nickel	52.80

## ONE-FUNCTION SHOWERHEAD

- Full spray provides more coverage and even flow for a relaxing shower experience
- Does not include shower arm, must purchase separately
- Diameter: 2-3/4"
- GPM Flow Rate: 1.8
- Showerhead Diameter: 2-3/4"



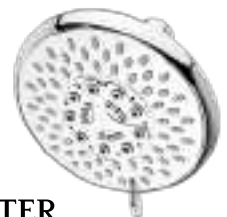
PUM003

Pfister.

Model No.	Mfg. No.	Material	Price /Each
PUM002	J15060C	Polished Chrome	18.49
PUM003	J15060K	Brushed Nickel	22.90

## MULTI-FUNCTION SHOWERHEAD

- Functions include penetrating massage, rain spray, invigorating spray, champagne/rain combo, champagne spray
- Invigorating and pulsating spray applies direct pressure to help relieve tension
- Rain spray provides more coverage and a soft, even flow
- Balanced combination of full spray and massage provides a gentle, relaxing experience
- Champagne spray provides a rejuvenating shower experience
- Shower arm must be purchased separately
- Diameter: 4-25/32"
- GPM Flow Rate: 1.8



Pfister.

Model No.	Mfg. No.	Material	Price /Each
PUM004	J15070C	Polished Chrome	26.40
PUM005	J15070K	Brushed Nickel	36.10

## PFIRST MODERN SINGLE CONTROL BATHROOM FAUCET

- Push & Seal™ drain requires no tools and installs in less than half the time of a standard pop-up drain
- Faucet mounts on sink deck or countertop
- Includes: Single post mounting ring, Valve, Cartridge
- Type: Pull Out
- Mount Location: Deck Mounted
- Installation Holes: 1
- Overall Height: 6-3/4"
- No. of Handles: 1
- GPM Flow Rate: 1.2
- Deck to Aerator Height: 3-15/16"
- Maximum Deck Thickness: 1-3/16"
- Drain Assembly: American Push & Seal



PUM007

Pfister.

Model No.	Mfg. No.	Material	Price /Each
PUM007	LG1420600	Polished Chrome	141.00
PUM008	LG142060K	Brushed Nickel	188.00

## PFIRST SERIES SINGLE CONTROL BATHROOM FAUCET

- Faucet mounts on sink deck or countertop
- Includes: Metal supply nuts, Valve, Cartridge, 50/50 Pop-up drain assembly
- Type: Pull Out
- Mount Location: Deck Mounted
- Installation Holes: 3
- Overall Height: 4-7/16"
- No. of Handles: 1
- GPM Flow Rate: 1.2
- Deck to Aerator Height: 2-7/32"
- Maximum Deck Thickness: 1-3/4"
- Drain Assembly: American 50/50



Pfister.

Model No.	Mfg. No.	Material	Price /Each
PUM011	LG1427000	Polished Chrome	88.90



## PFIRST SERIES CENTERSET BATHROOM FAUCET

- Faucet can be mounted on sink deck or countertop
- TiteSeal™ deckplate eliminates the need for putty or silicone and simplifies installation
- Includes: Metal supply nuts, valve, cartridge
- Features an all metal pop-up drain assembly
- Type: Traditional • Mount Location: Deck Mounted
- Installation Holes: 3
- Overall Height: 3-15/32"
- No. of Handles: 2
- GPM Flow Rate: 1.2
- Deck to Aerator: 1-13/16"
- Maximum Deck Thickness: 1"
- Drain Assembly: American All Metal Pop-Up
- Handle Material: Chrome
- Handle Type: Lever



Model No.	Mfg. No.	Material	Price /Each
PUM020	LG1436100	Polished Chrome	92.50
PUM021	LG143610K	Brushed Nickel	122.00
PUM022	LG143610Y	Tuscan Bronze	156.00

## PFIRST SERIES CENTERSET BATHROOM FAUCET

- Faucet can be mounted on sink deck or countertop
- Includes: Metal supply nuts, valve, cartridge
- Features an all metal pop-up drain assembly
- Fits 4" installation holes
- Type: Traditional
- Mount Location: Deck Mounted
- Installation Holes: 3
- Overall Height: 4"
- No. of Handles: 2
- GPM Flow Rate: 1.2
- Deck to Aerator: 1-7/16"
- Maximum Deck Thickness: 1"
- Drain Assembly: American All Metal Pop-Up
- Handle Type: Knob Handle



Pfister.

Model No.	Mfg. No.	Material	Handle Material	Price /Each
PUM018	LG1436000	Polished Chrome	Chrome	73.10
PUM019	LG1436002	Polished Chrome	Plastic	69.60

## PFIRST SERIES KITCHEN FAUCET WITH SIDE SPRAYER

- Includes coordinating, individual mount, decorative side spray
- Spout swivels for added maneuverability
- Decorative low-arc spout
- Type: Traditional
- Mount Location: Deck Mounted
- Installation Holes: 4
- Overall Height: 6-7/32"
- No. of Handles: 2
- GPM Flow Rate: 1.75
- Deck to Aerator: 5"
- Maximum Deck Thickness: 1"
- Side Sprayer Length: 47"
- Side Sprayer Colour: White
- Handle Type: Knob Handle



Pfister.

Model No.	Mfg. No.	Material	Handle Material	Price /Each
PUL989	G1354000	Polished Chrome	Stainless Steel	78.40
PUL990	G1354100	Polished Chrome	Plastic	67.80

Pfister.

## PFIRST SERIES CENTERSET BATHROOM FAUCET

- Faucet mounts on sink deck or countertop
- Includes: Metal supply nuts, Valve, Cartridge, Pop-up drain
- High arc spout for added clearance and reach
- Type: Traditional
- Mount Location: Deck Mounted
- Installation Holes: 3
- Overall Height: 5-15/16"
- No. of Handles: 2 • GPM Flow Rate: 1.2
- Deck to Aerator Height: 4"
- Maximum Deck Thickness: 1-1/4"
- Drain Assembly: American All Metal



Model No.	Mfg. No.	Material	Price /Each
PUM023	LG1487000	Polished Chrome	117.00
PUM024	LG148700K	Brushed Nickel	143.00
PUM025	LG148700Y	Tuscan Bronze	161.00

## PFIRST SERIES KITCHEN FAUCET

- Pforever Seal™ advanced ceramic disc valve technology with a never leak guarantee
- Includes optional decorative deckplate
- Mid-arc spout to help provide easy access
- Pull-out spray head with toggle button provides the ability to select spray or stream modes conveniently in the palm of your hand
- Type: Pull Out
- Mount Location: Deck Mounted
- Installation Holes: 1, 3
- Overall Height: 9-7/8"
- No. of Handles: 1 • GPM Flow Rate: 1.75
- Deck to Aerator: 6-1/4"
- Maximum Deck Thickness: 1-3/4"
- Spray Functions: Spray & Stream
- Pull-Out/Down Hose Length: 38"
- Handle Type: Lever



Pfister.

Model No.	Mfg. No.	Material	Price /Each
PUL977	G13310SS	Stainless Steel	170.00
PUL979	G13310YY	Tuscan Bronze	210.00

## PFIRST SERIES KITCHEN FAUCET WITH SIDE SPRAYER

- Meets ADA/ANSI A117.1 requirements, ensuring accessibility to all disabled persons
- Includes coordinating, deck-mount, decorative side spray
- Spout swivels for added maneuverability
- Trade exclusive faucet
- Mid-arc spout to help provide easy access
- Type: Pull Out
- Mount Location: Deck Mounted
- Installation Holes: 3
- Overall Height: 6-5/16"
- No. of Handles: 1 • GPM Flow Rate: 1.8
- Deck to Aerator Height: 4-3/4"
- Maximum Deck Thickness: 1-3/8"
- Pull-Out Hose Length: 47"



Pfister.

Model No.	Mfg. No.	Material	Price /Each
PUL981	G1343444	Polished Chrome	84.50

## PFIRST SERIES KITCHEN FAUCET

- Trade exclusive faucet
- Decorative low-arc spout
- Type: Traditional
- Mount Location: Wall-Mounted
- Installation Holes: 2
- No. of Handles: 2
- GPM Flow Rate: 1.8
- Handle Type: Lever



Pfister.

Model No.	Mfg. No.	Material	Price /Each
PUL975	G1271000	Polished Chrome	125.00